

BACK TO SCHOOL WITH BARRY MEADOW

TIMEFORMUS, NOLAN PREVIEW THE PREAKNESS

STETTIN, HALVEY TALK HANDICAPPING

HORSE *PLAYER*

MONTHLY

BROUGHT TO YOU BY HORSEPLAYERS ASSOCIATION OF NORTH AMERICA

MAY 2016

LET'S HANDICAP CANTERBURY PARK!

ANGLES, STATS AND MUCH MORE!



EXCLUSIVE

An Exchange Professional Speaks : Q & A with Optix's John Doyle

Preakness Previews – Page 1 & Page 20
 Barry Meadow Takes You to School – Page 3
 Q & A with John Doyle – Page 5
 Canterbury Park Preview – Page 7
 Canterbury Park Stats Packs – Page 8 & Page 34
 Exchange Tips from a Pro – Page 24
 Exchange First Impressions – Page 25
 Take the 30 Day Challenge – Page 32



The Horseplayer Monthly May 2016 Issue

TimeformUS Takes on the Preakness



By [Craig Milkowski](#), Chief Figure Maker, [TimeformUS](#)

The Triple Crown is the “holy grail” of American horse racing. Last year, American Pharoah became the first horse to win the three race series since Affirmed in 1978. The Kentucky Derby is the first race in the series and the most popular race run in the United States. It is both a culmination and a new beginning. The highly anticipated Derby champion is crowned and the chase for the Triple Crown begins. The winner each year is obviously the only horse with a chance to win the Triple Crown. The Belmont Stakes is the third leg and the final race in the series. It is the longest race at a mile and a half and has been dubbed the “Test of Champions”. But before the Derby winner can go for the glory of a Triple Crown at Belmont Park, the Preakness stands in the way. It is held each year at Pimlico Race Course in Baltimore. It is the shortest of the three races at one mile and three sixteenths. Five of the last 12 Derby winners have also won the Preakness. What are some signs that point to Preakness success?

Year	Winner	Last Race	Finish	TimeformUS Speed Figures			Style
				Last	Preakness		
2004	Smarty Jones	Kentucky Derby	1st	121	126		Tracker
2005	Afleet Alex	Kentucky Derby	3rd	116	121		Closer
2006	Bernardini	Withers Stakes	1st	124	127		Tracker
2007	Curlin	Kentucky Derby	3rd	113	126		Closer
2008	Big Brown	Kentucky Derby	1st	124	117		Tracker
2009	Rachel Alexandra	Kentucky Oaks	1st	134	128		Speed
2010	Lookin At Lucky	Kentucky Derby	6th	104	118		Midpack
2011	Shackleford	Kentucky Derby	4th	122	124		Speed
2012	I'll Have Another	Kentucky Derby	1st	123	130		Tracker
2013	Oxbow	Kentucky Derby	6th	111	117		Speed
2014	California Chrome	Kentucky Derby	1st	117	123		Tracker
2015	American Pharoah	Kentucky Derby	1st	127	124		Speed

Last Race

Ten of the last 12 winners of the Preakness Stakes ran in the Kentucky Derby and all finished sixth or better. It is obviously the most important “prep race” for the Preakness. The two horses that won the Preakness after not participating in the Derby both won graded stakes races with impressive TimeformUS Speed Figures. Bernardini romped in the Withers Stakes and Rachel

Alexandra, a filly, won the Kentucky Oaks the day before the Derby by a ridiculously easy 20 lengths.

At the time of this writing, only three horses from this year's Kentucky Derby are likely to run in Baltimore. Nyquist (123 TimeformUS Speed Figure) and Exaggerator (119), the top two finishers, should be considered strong contenders. Lani (108), the Japanese import that finished ninth, should not. Eight that did not run in the Derby, known as the “new shooters”, are probable for the Preakness.

New Shooters			
Name	Race	Finish	TimeformUS
Abiding Star	Parx Derby	1 st	111
Awesome Speed	Federico Tesio	1st	104
Cherry Wine	G1 Blue Grass	3rd	111
Collected	G3 Lexington	1st	112
Fellowship	G3 Pat Day Mile	4th	114
Laoban	G1 Blue Grass	4th	113
Stradivari	Allowance	1st	117
Uncle Lino	California Chrome	1st	117

None have the credentials Bernardini or Rachel Alexandra did. The most interesting is probably lightly raced Stradivari. He won an allowance race at Keeneland by nearly 15 lengths in his first start of the year and only his third start lifetime. His trainer is one of the best in the sport, Todd Pletcher. He'll need to improve off the 117 to win the Preakness and will also be picking up eight more pounds of weight for this race than he carried in his allowance win. He is, at most, a fringe contender. The other new shooter to run a 117 TimeformUS Speed Figure was Uncle Lino. He set a slow pace and beat a mediocre field in the ungraded California Chrome Stakes at Los Alamitos. He would be a surprise winner. The rest of these new faces have not shown enough ability to be taken seriously in this spot and would be shocking.

DERBY WARS
\$250,000
Biggest Contest EVER!
 Two-Day Contest - Oct. 8 & 9
 (continued on next page)

TimeformUS Speed Figures

TimeformUS Speed Figures date back to 2004. The average winning Preakness figure is 123 and has ranged from 117 to 130. That does not mean the horses have needed to have run that fast before the Preakness to be considered possible winners. These are young, improving horses that should be getting faster as they get older. The average last race TimeformUS Speed Figure of Preakness winners is 120 and ranges from 104 to 127. Based on speed figures, the main contenders are Nyquist and Exaggerator. The next tier includes Stradivari and Uncle Lino with the reservations stated previously. The rest--- good luck.

Running Style

American dirt racing is controlled by horses with speed. The Preakness is no different. Speed horses (running style of speed or tracker) have accounted for 75% of the last 12 winners. Talented closing types can win, as Afleet Alex and Curlin have shown, and Lookin At Lucky won a weak renewal of the race from the middle of the pack. Exaggerator is a proven closer at the Grade 1 level and shouldn't be dismissed for his running style. Any of the other horses without early speed are easy tosses from the win spot.



Join with promo code HANA

Summary

The most likely winners of the Preakness based on past history are those that ran in the Kentucky Derby and finished well. The top two, Nyquist and Exaggerator, are clearly the two horses to beat in the Preakness. None of the new shooters look particularly strong. The TimeformUS Speed Figures need to improve at least a few lengths and all are picking up weight for the Preakness. The Pimlico surface is a fair one, but that means speed still has an advantage. Exaggerator will need to close from the back to win but has the talent to do so with a clean run. If he is to win it is almost certainly Nyquist he'll be running down late. Any other horse would be surprise.

About the author- Craig Milkowski is the chief figure maker for TimeformUS. We had more in-depth Q&As with Craig in our [September 2015](#) and our [September 2013](#) issues.

An Editorial:

Racing Commissions Need to Protect the Betting Public Too

In March, the Kentucky Horse Racing Commission passed new pick 6 carryover rules for Derby day, at the request of Churchill Downs. The new rule allowed for a split of the pick 6 carryover monies, - should the bet not be hit - between two separate pick 6 pools on two different days; one of which was a "single ticket jackpot" bet.

In the DRF (at the time the rule changed was passed), [Steve Crist wrote](#), "This is dangerous policy that disrespects the integrity of the wagering pools." He called what Churchill and the KHRC did, "a game of pari-mutuel three card monte."

Steve also wrote, "should such a thing happen (and it did) - the effective "pick 6 takeout on Derby day would be a whopping 49%."

Leaving aside that this change was achieved through proper channels, when any change to a pool or a hike in takeout occurs; we believe it is incumbent upon the commissions to assure the betting public is protected in a more meaningful, transparent way.

One way to help achieve that would be to mandate racetracks to advertise any changes - in their programs, on their simulcast feeds, on industry websites - for say a period of six months.

The way it is now, any racetrack - as silly as this may sound - could apply to the commission to have 100% takeout on one pool on one day, and have it passed months earlier. Since the tracks do not have to let customers know of this change in any blanket way, unsuspecting customers could be betting into a pool months later thinking they're being charged the historical takeout of 20%, but paying 100%, with no recourse whatsoever.

The Commissions have a responsibility to more than horsemen and tracks. There are customers who are spending over \$10 billion per year fuelling the industry. They need protection, too.



A Teacher's Lesson

By Barry Meadow

What's your reaction when a 12-1 shot wins?

If you had the 12-1 shot, you might think you're one smart fella. If you didn't, you're likely to think that maybe you missed something in the handicapping, or maybe the infamous "they" put one over for a score.

The reality is much more prosaic. Sometimes 12-1 shots win. Usually, they don't. But just because something doesn't *usually* happen doesn't mean it *never* happens.

Let's say you think some particular thing happens to only one person in a million. Seems rare, doesn't it? But there are seven billion people on earth. That means that supposedly rare event happens to 7,000 people. Doesn't seem so unusual now, does it?

Let us visit an elementary school classroom to see the most probable explanation for the victory by the 12-1 shot. And it has nothing to do with brilliant handicapping, or bad handicapping, or insider scores.

The teacher puts 10 socks in a paper bag: four black, three white, two red, and one blue

She has each child reach into the bag and pull out a sock, record the color, then put the sock back in the bag for the next kid to try. After all 30 kids get a turn, the teacher asks for a show of hands--how many picked a black sock, how many a red, etc. Thus we learn the heart of probability theory: Every sock has some chance to be picked, but the black socks will be picked more often than the blue sock. If we tried this experiment 10,000 times, we'd get something close to the theoretical ratios: Black would get picked roughly twice as often as red, and approximately four times as often as blue.

Even so, sometimes three kids in a row will pick blue. That doesn't mean that blue is "hot," or the kids have some special insight. It simply means that if you do something often enough, unusual results will take place.

Thus the importance of lengthy trials to determine if a handicapping belief is true. Check only a hundred races and just about anything can happen—two 75-1 shots might score, favorites might win only 22 percent, some jockey might snag four races in a row. Some players are just a bit too quick to draw conclusions from limited evidence—evidence which, with further testing, regresses to the mean.

This doesn't mean that you have to check every result of every race ever run to draw conclusions. For instance, on the first day of a new meet, a certain trainer enters four horses and they all finish first or second. It's not a stretch to guess that the guy has his horses ready to roll, and when he enters three horses the next day, they rate a serious look. The converse is true as well—if a trainer is going poorly, expect more of the same until his results turn.

But back to our main point. Due to the classification system at the racetrack--\$10,000 claimers face \$10,000 claimers and horses with Beyers around 75 generally face

other horses with Beyers hovering around the same numbers--in every race, most entrants have at least some chance to win. Maybe not a big chance, but some chance nonetheless. The question then becomes not *who is going to win the race*--since in a hundred scenarios, many different winners may emerge--but *what should the odds be for each horse*?

In other words, which is the black sock and which is the blue sock?

All our work should be devoted to figuring out the chances of each horse, not simply who is most likely to win the race. This could make a longshot a better bet than a favorite—or vice versa. What is each horse (or combination) worth?

That isn't so easy. We can calculate with certainty the odds of anything in a fixed-odds game. Take a roulette wheel with 36 numbers and a zero and a double zero, or 38 spots where a ball can land. A single number pays off at 35-1 for a 5.26% house edge. But if the payoff were 40-1, life would be sweet.

In horse racing, though, we can never know the true odds on a particular horse, though we can make estimates. Because our estimates will never be quite as good as the public's, we have to allow some wiggle room. Thus if we think a horse has one chance in five of winning (true odds of 4-1 without a takeout), we'd better get at least 6-1 or higher if we want to make money long-term.

Making things more difficult are two problems—our estimates could be off (the horse really has only one chance in eight of winning, so if we bet him at 6-1 we're guaranteed to lose long term), and late odds changes sometimes convert a supposed overlay into an underlay. But who said the game was easy?

Let's finish this discussion by returning to our old friends, the socks. When we dip into the bag and pull out the blue sock, it usually doesn't mean that we are incredibly gifted sock-pickers who should turn pro. Nor did we fail to understand all the socks. Nor was the bag rigged.

No, something that figured to happen one time in ten did happen. There may be no lesson to be learned at all, other than that sometimes you reach into a bag and pull out a blue sock.

The quest for us as handicappers is to find horses that are overlays. All our work should be geared towards trying to estimate what the true odds should be. If we can do that with some accuracy, all we need do is wait until that blue sock is not offered at its true odds of 9-1, but 15-1 or 25-1. Or maybe till that black sock is not the 3-2 odds it really should be, but 2-1 or 5-2.

If we can do that, and we can wait, we can win.

About the author--Barry Meadow is the author of Money Secrets at the Racetrack. For seven years, he published the newsletter Meadow's Racing Monthly. In 2014, he won the first-ever Ron Rippey Award for handicapping media. His newly revised website, trpublishing.com, features a number of free handicapping articles. To be notified about his upcoming book, send an e-mail to barry@trpublishing.com requesting to be on his mailing list.

INTRODUCING BETFAIR EXCHANGE

Up to \$200 welcome bonus



 **betfair.com**

Join today >>

18+. NJ Residents only. Void where prohibited Min. play required. Terms apply

Q & A with John Doyle



National Handicapping Champion and creator of [OptixEQ](#)

HM: How did you come up with the idea for Optix?

JD: We just created a platform for the way we handicap. Initially, we were not really looking for it to be commercial. You know the expression, “Work smarter, not harder?” We basically wanted to take the key elements we used to analyze a race, and present that in a visually dynamic way, so that instead of spending a half-hour or so handicapping a race in great detail, we’d only have to spend five minutes—yet still have superior information.

Our focus has been more on trip- and pace-handicapping, but we have many facets to the platform, including our own speed figures (OptixFIGs). The best part about OptixEQ is that the information is presented in such a simple, visual way—yet the data and analysis behind the visuals is so high-level.

When we were building the platform, we also wanted to have a consistent approach so that we could validate and measure what was working and what was not, which is why we came up with certain keywords and color schemes in our OptixNOTES past-performances and for the metrics used on the OptixPLOT. We consider ourselves a visual handicapping platform with an emphasis on analytics.

HM: Often times when someone creates a new product, he or she dives really deep into their handicapping and learns new things, or perhaps finds out something about their handicapping tenets they thought was right, but wasn't. Has the process made you a better handicapper? Did you learn anything from the process of interest?

JD: Yes, it's been a very introspective journey. We started to realize what was important to us—and what would be important to the end-user. We found that our traditional handicapping had a lot of information clutter. There was a lot of information that we overused or emphasized too much, like pedigree and trainer analysis. Now I don't want all the trainer and pedigree experts throwing stones, because there is value in what they do—it's just that we wanted our approach to be more focused on the horse itself. We understand the trainer plays a pivotal role, but from a handicapping perspective, that information is secondary to the horse itself.

I love some of those trainer stats that get mentioned. I wonder if a trainer even knows he's really good third off a layoff with blinkers off stretching out a horse to a mile for the first time. I assume most trainers have their methods, but they are most likely not tailored to that level of specificity. We are trying to work on a trainer product and find the right balance between the trainer patterns and some of the more qualitative data (i.e., workouts, trips, horse's style, and physicality).

Also, and I know I will get into trouble for this one, but from a handicapping—not breeding—perspective, I think pedigree analysis is well overblown. It may be because I'm not that good at it, but it's my opinion that once you've seen a horse physically and seen how they run, then that trumps what his mother or father or their offspring could do.

We remain open to incorporating all handicapping methods, however, and, over time, we will continue to evolve our products and adjust to changes—especially based on the feedback of our customers.



HM: Trip notes have been a real pencil and paper struggle for many handicappers. Can you tell us what goes into your trip notes?

JD: OptixNOTES is a really integral part of our platform—and it's not just because we think our notes are superior, but it's also because we are able to do analytics based on the data (performance grades, keyword descriptors, projections, etc.) that we have collected.

But as far as making the notes go, we first start with making sure that the people doing the trip notes are really good and have a passion for doing it. Anyone who has ever done trip notes for any period of time knows they can be a real grind. We have an excellent NOTES team lead by Emily Gullikson and Donald Harris, who have been a part of Optix from very early on, and it's quite impressive to see the vast repository of trip notes and grades we have amassed. When you view these notes and grades as part of our integrative past-performance platform, you are seeing information—really valuable information—that no one else has.

(continued on next page)

I think part of the reason our OptixNOTES product has been so successful is because we have a specific methodology that everyone on the team adheres to—and that makes our notes, grades, and keywords consistent, no matter what the circuit, so we can accurately assess a horse's form and also pick up on form-cycle patterns that can't be discerned from just looking at the running lines. And when I talk about "methodology," I mean there is an approach to not only cataloging the data but to collecting it as well—from paddock and pre-race activity all the way through the gallop-out. We also have quality-control built into the process, so we can be sure that the information provided to our customers is the best it can possibly be.



HM: While many of us as long-time handicappers tend to be married in our ways -- we get used to the form, or other paper past performances or figures etc - younger people betting DFS, Sports etc are very different. Do you think products like yours and some of the other newer products have a better chance to reach a new market?

JD: An OptixEQ handicapping approach is much more visual, and if you trust your eyes and our information, you should be able to eliminate bad horses and just focus on contenders much more rapidly than anything else. Like I said, we are trying to remove the clutter so that the handicapping process is much more streamlined and efficient, freeing up your mental energy so that you can be creative with your wagers.

How many players tell you that they are great handicappers but terrible bettors? A lot—and that's because they spend 90 percent of their time handicapping and only 10 percent of their time writing tickets. Traditional handicapping is a lot of work—and the brain is only capable of processing so much information at a time. OptixEQ makes the handicapping process so much more efficient and a lot more fun.

As for your generational point: we have found that some of the younger players have taken to our stuff much more rapidly as compared to the more established players who tend to be set in their ways. The younger players are less intimidated by the way the interface looks, and they dive right in, partly because they are used to digesting

information in a visual way.

We understand that it's hard to change something you've been doing for twenty years—and if you are doing well and winning tournaments, then why change? However, we have found that the players who were on the cusp of taking their handicapping to the next level and were looking for an edge have done very well incorporating our products.

One of the strongest things we have going for us is our learning curve—it's quite easy. If you presented our platform to a new player and put it next to a traditional past-performance product, I can guarantee you that the new player will gravitate to our product first because it's intuitive and easy to use. You can instantly look at an OptixPLOT and understand the pace dynamics and the shape of a race.

HM: Whether you are selling figures or new handicapping products, horses, hay or feed, or are a fan or bettor or owner, we all want to see the game grow; to broaden the tent. Where do you think the sport can improve, to increase handle, bring more people into the game, and grow again?

JD: I think innovation is a key component. One area that needs improvement is the whole information space. I'm being a bit self-serving here, but racing can do a better job if it provided more open access to information while also supporting innovation efforts to present and educate new players on the use of that handicapping data.

If you're a new player in the game today, you essentially have to learn the game the same way I did 45 years ago. Someone hands you a Racing Form and wishes you good luck. I don't see that cutting it with this generation. They do a lot of online self-learning, and they want their information more quickly. They aren't necessarily looking for the answer; they just need products that cut through the clutter and help them make better handicapping decisions more quickly. I'd like to think that OptixEQ is a game-changer in this regard.

Horseplayer Alert!!!

STATS LLC and Equibase Company entered into a strategic partnership last year to develop products and services for horseplayers. The goal of the partnership was to develop a product to improve horseplayers' experiences while handicapping.

This product is now ready for review and Equibase is seeking potential BETA testers. That is where you come in! All participants who test the product and complete an online questionnaire will receive complimentary access to the product for three months once it is launched.

If you are interested in participating as a BETA tester, please take a brief survey at the link below.

Survey Link:

<https://www.surveymonkey.com/r/FF5XG6R>

Canterbury Park: What You Need to Know

When Canterbury Park officials announced that takeout for the upcoming race meet would be reduced to the lowest, on average, in the country, the reaction from horse players was immediate and overwhelmingly positive. When the 69-day meet begins May 20, win, place show takeout will be 15 percent and all exotics will be 18 percent. For many however, the suburban Minneapolis, Minnesota, racetrack was not on the radar until now. What should horse players expect from Canterbury Park?

The Meet

The meet runs May 20 – Sept. 17 with eight to 10 races per program.

First post on Thursdays and Fridays is 6:30 p.m. CDT; weekend and holiday post time is 12:45 p.m. In August, Saturday racing begins at 6:30 p.m. More information is available at www.canterburypark.com.

The Track

Canterbury's main track is a one-mile dirt oval. Sprints are run at five, five and one-half, six and six and one-half furlongs with routes at one mile, one mile seventy yards and one and one-sixteenth miles. The turf course is seven furlongs in circumference with a turf chute that accommodates various route distances. The course is used two to three times per race day. Occasionally a five furlong turf sprint is carded as well. Average field size in turf races last season was nine horses.

Canterbury has converted to an HD broadcast. Replays and a live stream are offered on the website.

The Races

Canterbury Park has a new racing secretary in Rob Junk. Expect to see a mix of claiming and allowance races daily. Purses range from \$10,000 for bottom level claimers to \$34,000 for allowance horses. Maidens, racing for a \$28,000 purse, are often afforded the opportunity to run on the grass and attract full fields. Canterbury allows for Also Eligible and Main Track Only entries with scratch time at 10:00 a.m. on race day. Canterbury's stakes schedule is spread across the meet with races on both dirt and turf. The Mystic Lake Derby on Aug. 27 offers the meet's largest purse of \$200,000.

The Wagers

WPS and exacta wagering is offered in all races. Trifectas are available in races with five or more runners and superfectas with six or more. New this season is the \$.50 Turf Top Five, a pentafecta wager offered on all turf races. Doubles, with a \$1 base, and pick 3s roll throughout the card beginning in the first race. Two pick 4s are offered daily. The pick 3 and 4 have a \$.50 base. In an effort to provide the most current wagering information to bettors, win odds will be updated at 10-second intervals when there are less than 10 minutes to

post. As a result of this change, Canterbury Park will have the fastest-updating win odds in North American racing. Currently, most tracks update at intervals averaging 30 seconds.

Favorites won last season at a 34 percent rate.

A blue rectangular graphic with a dark blue background. At the top, there is a logo for 'AmWager' featuring a stylized horse head in profile. Below the logo, the text 'WIN BIG WITH AMWAGER!' is written in large, white, bold, sans-serif capital letters. Underneath this, there is a list of five bullet points in white text: 'Independently Owned & Player Focused', 'Pro Wager Platform', 'Cash Rewards Posted to Account Daily', 'Daily Referral Bonus', and 'Endorsed by NHC Champ Paul Matties'. At the bottom of the graphic, there is a white button with the text 'JOIN TODAY FOR YOUR BEST ROI!' in blue, bold, sans-serif capital letters, followed by a small white right-pointing arrow.

The Connections

Trainer Robertino Diodoro won his second consecutive training title in 2015 with a 22 percent hit rate and an ROI of .76. He is active at the claim box and not afraid to put his horses at a level where they can compete, which means they often look good and take a lot of money. In the past two seasons he has used various riders but usually settles on two or three for the live mounts. Look for Jorge Carreno and Geovanni Franco, who rode Diodoro winners at Oaklawn this winter, to get plenty of those.

Mac Robertson is a perennial powerhouse at Canterbury. He was top trainer for nine seasons before Diodoro made an impact. He always has a strong contingent of Minnesota-breds although along with success often comes short prices.

Trainer Francisco Bravo had a live barn last season, winning at a 23 percent rate with a 1.33 ROI. He too will have many well-intended Minnesota breds but his winners often bring prices early in the meet. Expect many more starters from the Bravo barn this year as he has consolidated his stable to focus on Canterbury. Joe Sharp worked at Canterbury as both a jockey and an assistant trainer in the past. Since then he has become nationally prominent as a trainer and will now have a stable at Canterbury. Karl Broberg, who led the nation in wins the past two years, makes his first foray into Minnesota as well. Kari Craddock, who last raced at Canterbury in 1996, will also have a string of 30.

The jockey colony figures to be deep. Dean Butler has a knack for ending up on some of the top Minnesota-breds each year and always is a threat for top riding honors. He has a longstanding relationship with trainer Bernell Rhone but seems to acquire mounts on the best 2-year-olds regardless of the barn.

Alex Canchari will ride the entire meet. In past years he arrived late in the season. The young rider has quickly learned the game and is a favorite amongst bettors for his aggressive style and ability to finish. He is coming off a successful Oaklawn meet where he won on several longshots and delivered a flat-bet profit 1.25 ROI.

Canterbury Stats Pack - Part One

Jeff Platt is the owner and creator of jcapper software, as well as being an everyday horseplayer. Jeff scoured the Canterbury Park 2015 stats to see if he could uncover some patterns or angles to help him handicap the upcoming meet. He shares his work here

Although we can never look at previous meets as a sole predictor of upcoming meets, these are my takeaways after running stats for the CBY 2015 meet:

1. Percentage of winning favorites overall was 0.3429 (lower than the 0.3739 national average for 2015.)

There was often value to be had by betting against the favorite and backing the 2nd or 3rd favorite.

2. Early pace and far outside posts were effective on the dirt.

3. Late pace was good on the turf. (The 7 hole and 8 hole were good on the turf.)

--Jeff

Jockey and trainer stats are available on the Back Page, starting on Page 34

DIRT --

DIRT, all distances --

By: Gate Draw from the rail out

Rail	Pos	P/L	Bet	Roi	Wins	Plays	Pct	Impact

1		-300.50	790.00	0.6196	45	395	.1139	0.8622
2		-152.40	790.00	0.8071	58	395	.1468	1.1113
3		-389.20	790.00	0.5073	37	395	.0937	0.7089
4		-203.00	790.00	0.7430	63	395	.1595	1.2071
5		-207.40	780.00	0.7341	50	390	.1282	0.9703
6		-171.40	728.00	0.7646	52	364	.1429	1.0812
7		-180.50	586.00	0.6920	43	293	.1468	1.1107
8		-71.00	374.00	0.8102	22	187	.1176	0.8904
9		-63.20	214.00	0.7047	15	107	.1402	1.0610
10		114.60	98.00	2.1694	8	49	.1633	1.2356
11		92.00	40.00	3.3000	3	20	.1500	1.1352
12		-14.00	14.00	0.0000	0	7	.0000	0.0000

**UP TO \$200 BONUS
WHEN YOU SIGN UP NOW**

18+. NJ Residents only.
Void where prohibited.
Min. play required.
Terms apply.

 betfair.com

Join today >>

DIRT, all distances --

By: HDW RUN STYLE

Value	P/L	Bet	Roi	Wins	Plays	Pct	Impact	RUN STYLE

0	-275.70	1250.00	0.7794	88	625	.1408	1.0656	E
15	-116.80	536.00	0.7821	35	268	.1306	0.9884	EP
30	-94.40	494.00	0.8089	44	247	.1781	1.3482	P
45	-187.50	1114.00	0.8317	91	557	.1634	1.2365	PS
60	-375.40	1404.00	0.7326	89	702	.1268	0.9595	S
75	-220.40	514.00	0.5712	25	257	.0973	0.7362	SS
90	-275.80	682.00	0.5956	24	341	.0704	0.5327	U

DIRT, all distances --

By: SQL-F19 Rank (Early Consensus)

Rank	P/L	Bet	Roi	Wins	Plays	Pct	Impact

1	29.80	840.00	1.0355	107	420	.2548	1.9281
2	-338.40	814.00	0.5843	58	407	.1425	1.0785
3	-202.60	778.00	0.7396	56	389	.1440	1.0895
4	-242.20	790.00	0.6934	55	395	.1392	1.0538
5	-90.80	774.00	0.8827	47	387	.1214	0.9191
6	-270.00	722.00	0.6260	34	361	.0942	0.7128
7	-253.00	552.00	0.5417	16	276	.0580	0.4387
8	-196.60	374.00	0.4743	13	187	.0695	0.5261
9	36.20	202.00	1.1792	6	101	.0594	0.4496
10	6.00	100.00	1.0600	3	50	.0600	0.4541
11	-12.40	36.00	0.6556	1	18	.0556	0.4205
12	-12.00	12.00	0.0000	0	6	.0000	0.0000



DIRT SPRINTS

By: Gate Draw from the rail out

Rail Pos	P/L	Bet	Roi	Wins	Plays	Pct	Impact

1	-266.70	622.00	0.5712	31	311	.0997	0.7596
2	-163.20	622.00	0.7376	42	311	.1350	1.0291
3	-274.40	622.00	0.5588	29	311	.0932	0.7106
4	-112.00	622.00	0.8199	53	311	.1704	1.2987
5	-150.20	612.00	0.7546	38	306	.1242	0.9463
6	-170.40	568.00	0.7000	39	284	.1373	1.0465
7	-90.70	462.00	0.8037	39	231	.1688	1.2866
8	-95.00	304.00	0.6875	17	152	.1118	0.8523
9	-35.60	176.00	0.7977	14	88	.1591	1.2124
10	111.80	84.00	2.3310	7	42	.1667	1.2701
11	74.40	34.00	3.1882	2	17	.1176	0.8965
12	-12.00	12.00	0.0000	0	6	.0000	0.0000
13	0.00	0.00	0.0000	0	0	.0000	0.0000
14	0.00	0.00	0.0000	0	0	.0000	0.0000
15	0.00	0.00	0.0000	0	0	.0000	0.0000
16	0.00	0.00	0.0000	0	0	.0000	0.0000
17	0.00	0.00	0.0000	0	0	.0000	0.0000
18	0.00	0.00	0.0000	0	0	.0000	0.0000
19	0.00	0.00	0.0000	0	0	.0000	0.0000

DIRT SPRINTS

By: HDW RUN STYLE

Value	P/L	Bet	Roi	Wins	Plays	Pct	Impact	RUN STYLE
-----								-----
0	-263.50	1086.00	0.7574	75	543	.1381	1.0526	E
15	-60.80	448.00	0.8643	29	224	.1295	0.9866	EP
30	-82.80	412.00	0.7990	38	206	.1845	1.4057	P
45	-108.30	768.00	0.8590	60	384	.1563	1.1907	PS
60	-257.40	1044.00	0.7534	68	522	.1303	0.9927	S
75	-179.40	344.00	0.4785	17	172	.0988	0.7532	SS
90	-231.80	638.00	0.6367	24	319	.0752	0.5733	U

DIRT SPRINTS

By: SQL-F19 Rank (Early Consensus)

Rank	P/L	Bet	Roi	Wins	Plays	Pct	Impact

1	-1.60	664.00	0.9976	83	332	.2500	1.9051
2	-247.80	646.00	0.6164	50	323	.1548	1.1797
3	-122.80	608.00	0.7980	42	304	.1382	1.0528
4	-271.60	616.00	0.5591	41	308	.1331	1.0144
5	-48.20	600.00	0.9197	37	300	.1233	0.9399
6	-182.00	566.00	0.6784	25	283	.0883	0.6732
7	-185.80	444.00	0.5815	15	222	.0676	0.5149
8	-159.60	304.00	0.4750	10	152	.0658	0.5014
9	55.40	166.00	1.3337	5	83	.0602	0.4591
10	20.00	86.00	1.2326	3	43	.0698	0.5317
11	-30.00	30.00	0.0000	0	15	.0000	0.0000
12	-10.00	10.00	0.0000	0	5	.0000	0.0000

DIRT ROUTES

By: Gate Draw from the rail out

Rail Pos	P/L	Bet	Roi	Wins	Plays	Pct	Impact

1	-33.80	168.00	0.7988	14	84	.1667	1.2294
2	10.80	168.00	1.0643	16	84	.1905	1.4050
3	-114.80	168.00	0.3167	8	84	.0952	0.7025
4	-91.00	168.00	0.4583	10	84	.1190	0.8782
5	-57.20	168.00	0.6595	12	84	.1429	1.0538
6	-1.00	160.00	0.9938	13	80	.1625	1.1987
7	-89.80	124.00	0.2758	4	62	.0645	0.4759
8	24.00	70.00	1.3429	5	35	.1429	1.0538
9	-27.60	38.00	0.2737	1	19	.0526	0.3882
10	2.80	14.00	1.2000	1	7	.1429	1.0538
11	17.60	6.00	3.9333	1	3	.3333	2.4588
12	-2.00	2.00	0.0000	0	1	.0000	0.0000



The Smart Money is On AmWager!

DIRT ROUTES

By: HDW RUN STYLE

Value	P/L	Bet	Roi	Wins	Plays	Pct	Impact	RUN STYLE

0	-12.20	164.00	0.9256	13	82	.1585	1.1694	E
15	-56.00	88.00	0.3636	6	44	.1364	1.0059	EP
30	-11.60	82.00	0.8585	6	41	.1463	1.0795	P
45	-79.20	346.00	0.7711	31	173	.1792	1.3218	PS
60	-118.00	360.00	0.6722	21	180	.1167	0.8606	S
75	-41.00	170.00	0.7588	8	85	.0941	0.6943	SS
90	-44.00	44.00	0.0000	0	22	.0000	0.0000	U

DIRT ROUTES

By: SQL-F19 Rank (Early Consensus)

Rank	P/L	Bet	Roi	Wins	Plays	Pct	Impact

1	31.40	176.00	1.1784	24	88	.2727	2.0118
2	-90.60	168.00	0.4607	8	84	.0952	0.7025
3	-79.80	170.00	0.5306	14	85	.1647	1.2149
4	29.40	174.00	1.1690	14	87	.1609	1.1870
5	-42.60	174.00	0.7552	10	87	.1149	0.8479
6	-88.00	156.00	0.4359	9	78	.1154	0.8511
7	-67.20	108.00	0.3778	1	54	.0185	0.1366
8	-37.00	70.00	0.4714	3	35	.0857	0.6323
9	-19.20	36.00	0.4667	1	18	.0556	0.4098
10	-14.00	14.00	0.0000	0	7	.0000	0.0000
11	17.60	6.00	3.9333	1	3	.3333	2.4588
12	-2.00	2.00	0.0000	0	1	.0000	0.0000

**HARNESS AND GREYHOUND
HANDICAPPING CONTESTS**

Now Available at
BETAMERICA

Live Video, Live Odds,
Free Handicapping Info



TURF --

TURF, all distances --

By: HDW RUN STYLE

Value	P/L	Bet	Roi	Wins	Plays	Pct	Impact	RUN STYLE

0	-135.60	346.00	0.6081	17	173	.0983	0.8818	E
15	-94.60	142.00	0.3338	4	71	.0563	0.5056	EP
30	-67.40	162.00	0.5840	11	81	.1358	1.2186	P
45	-184.80	734.00	0.7482	45	367	.1226	1.1003	PS
60	-245.00	782.00	0.6867	42	391	.1074	0.9639	S
75	26.00	478.00	1.0544	30	239	.1255	1.1264	SS
90	106.40	84.00	2.2667	3	42	.0714	0.6410	U

ONE TURN TURF RACES --

5 FURLONGS TURF

By: Gate Draw from the rail out

Rail Pos	P/L	Bet	Roi	Wins	Plays	Pct	Impact

1	-4.60	18.00	0.7444	1	9	.1111	0.9383
2	-9.00	18.00	0.5000	2	9	.2222	1.8765
3	-18.00	18.00	0.0000	0	9	.0000	0.0000
4	32.60	18.00	2.8111	2	9	.2222	1.8765
5	-12.20	18.00	0.3222	1	9	.1111	0.9383
6	-18.00	18.00	0.0000	0	9	.0000	0.0000
7	6.40	16.00	1.4000	2	8	.2500	2.1111
8	-4.80	14.00	0.6571	1	7	.1429	1.2063
9	-8.00	8.00	0.0000	0	4	.0000	0.0000
10	-2.00	2.00	0.0000	0	1	.0000	0.0000
11	-2.00	2.00	0.0000	0	1	.0000	0.0000
12	-2.00	2.00	0.0000	0	1	.0000	0.0000

**UP TO \$200 BONUS
WHEN YOU SIGN UP NOW**

18+. NJ Residents only.
Void where prohibited.
Min. play required.
Terms apply.

 betfair.com

Join today >>

By: HDW RUN STYLE

Value	P/L	Bet	Roi	Wins	Plays	Pct	Impact	RUN STYLE

0	-5.40	56.00	0.9036	3	28	.1071	0.9048	E
15	-4.60	22.00	0.7909	1	11	.0909	0.7677	EP
30	10.60	12.00	1.8833	2	6	.3333	2.8148	P
45	-18.80	34.00	0.4471	2	17	.1176	0.9935	PS
60	-20.00	20.00	0.0000	0	10	.0000	0.0000	S
75	2.60	2.00	2.3000	1	1	1.0000	8.4444	SS
90	-6.00	6.00	0.0000	0	3	.0000	0.0000	U

By: SQL-F22 Rank (Late Consensus)

Rank	P/L	Bet	Roi	Wins	Plays	Pct	Impact

1	1.80	18.00	1.1000	3	9	.3333	2.8148
2	-5.00	20.00	0.7500	2	10	.2000	1.6889
3	-13.00	18.00	0.2778	1	9	.1111	0.9383
4	-2.60	16.00	0.8375	1	8	.1250	1.0556
5	-20.00	20.00	0.0000	0	10	.0000	0.0000
6	33.20	24.00	2.3833	2	12	.1667	1.4074
7	-10.00	10.00	0.0000	0	5	.0000	0.0000
8	-14.00	14.00	0.0000	0	7	.0000	0.0000
9	-6.00	6.00	0.0000	0	3	.0000	0.0000
10	-2.00	2.00	0.0000	0	1	.0000	0.0000
11	-2.00	2.00	0.0000	0	1	.0000	0.0000
12	-2.00	2.00	0.0000	0	1	.0000	0.0000



2 NHC Spots!

The Best REAL-Money
Online Tournament.

\$300 Sign-Up Bonus



Join with promo code HANA

TWO TURN TURF RACES --

ALL TWO TURN TURF DISTANCES (7.5f, 8.32f, and 8.5f)

By: Gate Draw from the rail out

Rail Pos	P/L	Bet	Roi	Wins	Plays	Pct	Impact

1	-114.20	286.00	0.6007	15	143	.1049	0.9448
2	-79.60	286.00	0.7217	15	143	.1049	0.9448
3	-12.40	286.00	0.9566	21	143	.1469	1.3227
4	-164.40	286.00	0.4252	13	143	.0909	0.8188
5	13.60	286.00	1.0476	18	143	.1259	1.1337
6	-126.20	284.00	0.5556	14	142	.0986	0.8880
7	134.80	270.00	1.4993	17	135	.1259	1.1342
8	2.60	218.00	1.0119	16	109	.1468	1.3221
9	-103.60	172.00	0.3977	8	86	.0930	0.8379
10	-42.40	98.00	0.5673	3	49	.0612	0.5514
11	-27.60	70.00	0.6057	3	35	.0857	0.7720
12	-34.00	34.00	0.0000	0	17	.0000	0.0000

ALL TWO TURN TURF DISTANCES (7.5f, 8.32f, and 8.5f)

By: HDW RUN STYLE

Value	P/L	Bet	Roi	Wins	Plays	Pct	Impact	RUN STYLE

0	-130.20	290.00	0.5510	14	145	.0966	0.8696	E
15	-90.00	120.00	0.2500	3	60	.0500	0.4503	EP
30	-78.00	150.00	0.4800	9	75	.1200	1.0808	P
45	-166.00	700.00	0.7629	43	350	.1229	1.1066	PS
60	-225.00	762.00	0.7047	42	381	.1102	0.9929	S
75	23.40	476.00	1.0492	29	238	.1218	1.0975	SS
90	112.40	78.00	2.4410	3	39	.0769	0.6928	U



WIN BIG WITH AMWAGER!

- Independently Owned & Player Focused
- Pro Wager Platform
- Cash Rewards Posted to Account Daily
- Daily Referral Bonus
- Endorsed by NHC Champ Paul Matties

JOIN TODAY FOR YOUR BEST ROI! ▶

ALL TWO TURN TURF DISTANCES (7.5f, 8.32f, and 8.5f)

By: SQL-F22 Rank (Late Consensus)

Rank	P/L	Bet	Roi	Wins	Plays	Pct	Impact

1	-0.80	312.00	0.9974	37	156	.2372	2.1363
2	2.80	290.00	1.0097	19	145	.1310	1.1802
3	-56.40	286.00	0.8028	24	143	.1678	1.5117
4	-155.40	286.00	0.4566	11	143	.0769	0.6928
5	-69.80	284.00	0.7542	14	142	.0986	0.8880
6	-115.40	276.00	0.5819	12	138	.0870	0.7832
7	-181.00	278.00	0.3489	9	139	.0647	0.5832
8	92.60	214.00	1.4327	8	107	.0748	0.6734
9	23.20	170.00	1.1365	6	85	.0706	0.6358
10	-23.20	86.00	0.7302	2	43	.0465	0.4189

SHIPPERS – WHO DOES WELL?

			WIN	WIN		WIN		PLACE	PLACE
TRACKLAST	PLAYS	WINS	PCT	IMPACT	ROI	PLACES		PCT	ROI

APX	68	11	0.1618	1.2876	0.8515	18		0.2647	0.8985
AQU	1	0	0	0	0	0		0	0
ARP	2	0	0	0	0	0		0	0
ASD	9	0	0	0	0	1		0.1111	0.3556
BCF	6	0	0	0	0	0		0	0
BEL	2	0	0	0	0	0		0	0
CBY	3204	408	0.1273	1.0131	0.7655	817		0.255	0.7896
CDX	20	6	0.3	2.3874	0.955	11		0.55	1.115
CLS	5	0	0	0	0	0		0	0
CPW	5	0	0	0	0	0		0	0
CRC	2	0	0	0	0	0		0	0
DED	1	0	0	0	0	0		0	0
DEL	3	0	0	0	0	1		0.3333	0.7
ELP	4	0	0	0	0	3		0.75	1.0625
EVD	1	0	0	0	0	0		0	0
FGX	27	5	0.1852	1.4738	0.7963	10		0.3704	0.7148
FMT	1	0	0	0	0	0		0	0

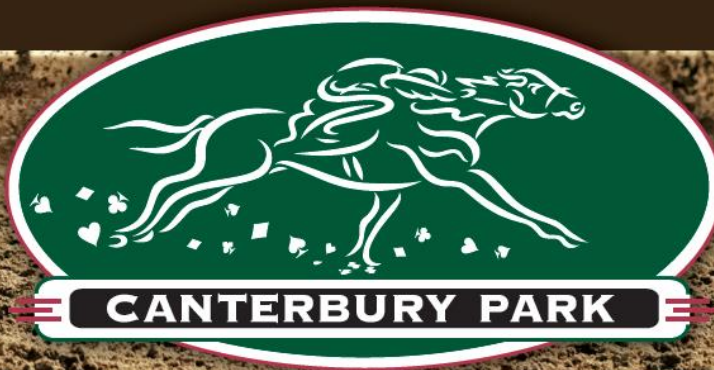
FON	84	3	0.0357	0.2841	0.2107	10	0.119	0.3929
FTP	2	0	0	0	0	0	0	0
GGX	2	0	0	0	0	0	0	0
GPX	8	0	0	0	0	0	0	0
HAW	61	11	0.1803	1.4348	1.1738	24	0.3934	1.0525
HOL	2	0	0	0	0	1	0.5	1.25
HOU	7	1	0.1429	1.1372	0.5429	2	0.2857	0.6143
HPO	21	1	0.0476	0.3788	0.1476	4	0.1905	0.4667
IND	3	0	0	0	0	1	0.3333	0.4667
KEE	19	2	0.1053	0.838	0.3053	4	0.2105	0.2947
LRC	2	0	0	0	0	1	0.5	0.8
LRL	4	1	0.25	1.9895	0.925	3	0.75	1.225
LSX	22	3	0.1364	1.0855	0.6636	8	0.3636	0.8114
MNR	6	0	0	0	0	0	0	0
OPX	35	6	0.1714	1.364	1.0086	15	0.4286	0.8643
PHA	1	1	1	7.958	1.8	1	1	1.4
PID	1	0	0	0	0	0	0	0
PIM	1	0	0	0	0	1	1	2.6
PRM	224	19	0.0848	0.6748	0.7355	38	0.1696	0.7067
RET	1	0	0	0	0	0	0	0
RPX	23	5	0.2174	1.7301	2.9826	6	0.2609	1.3478
SAR	2	0	0	0	0	1	0.5	1.5
SAX	19	4	0.2105	1.6752	0.4053	9	0.4737	0.7026
TAM	46	13	0.2826	2.2489	0.9109	18	0.3913	0.8163
TDN	6	3	0.5	3.979	2.0833	4	0.6667	1.4333
TUP	129	22	0.1705	1.3568	1.014	39	0.3023	0.8023
WOX	3	0	0	0	0	0	0	0
WRD	29	3	0.1034	0.8229	0.9	5	0.1724	0.5276



Jockey and trainer stats are available on the Back Page, starting on Page 34



Now Featuring the
LOWEST TAKEOUT
in America



Live Racing Now – September 17

15% WPS | 18% EXOTICS

**EVERY RACE.
EVERY DAY.
ALL SEASON.**

Our goal is simple become one of the most
horseplayer friendly tracks in the nation.

New This Year

Lowest Takeout in America
Fastest Win Odd Updates
High Definition Signal

Come Play.

canterburypark.com

Lowest Takeout Based on Effective Blended Takeout Rate of all Wagers.

QUICK HITS

BROUGHT TO YOU BY

PAULICK REPORT.com

YOUR HOMEPAGE FOR THE THOROUGHBRED INDUSTRY

NYRA Bets to Launch in July

Officials with the New York Racing Association announced on May 17 that NYRA Bets, their new national Advance Deposit Wagering service, will go live in July to join with the opening of the 2016 meet at Saratoga. This new platform will replace the existing NYRA Rewards, which is only open to New York residents.

"NYRA Bets will be a premier ADW enhanced by our partnership with GBE Technologies, a recognized global leader in online wagering solutions," said Chris Kay, Chief Executive Officer and President of the New York Racing Association. "We look forward to providing horseplayers across the country with access to the industry's finest racing and most advanced technology."

More information on this story is available [here](#).

Cummings Presents EquiLottery to KHRC

Brad Cummings, the CEO and founder of EquiLottery, which is a "lottery game based on the results of live horse racing, along with Kentucky research and new game elements," presented the concept and plan behind the game to the Kentucky Horse Racing Commission at their latest meeting.

"As we continued to find a workable version of our game that took into account the needs of state lotteries as they currently operate, it became evident a tweak to our original model was necessary to make EquiLottery a reality now," said Cummings. "Our primary goals have been and will always be to introduce millions of new people to the excitement of live horse racing while creating an expansion of the lottery player base and returning new profits to the good causes state lotteries exist to support. After 6 ½ years and millions of dollars in investment, we are on the brink of accomplishing these goals."

For more details on Cummings's presentation and EquiLottery, click [here](#).

TVG Pins Derby Day Outage on "Human Error"

TVG's online betting system went down on Derby Day, impacting an untold number of horseplayers who were

attempting to place wagers. The company cited "human error" for the problem.

"At TVG, we know how important it is to provide a great experience to our wagering account holders, not only on the first Saturday in May, but every day. Today, plain and simple, we let many of you down, and we're sorry," said TVG CEO Kip Levin. "We build our products to handle enormous amounts of volume and have committed significant time and resources to accommodate a growing customer base. This year in particular, we took unprecedented measures to ensure a great experience for our customers. Regretfully, due to human error, we introduced today's problem during a final readiness check. This won't happen again."

TVG's issues may have had an impact on Derby Day wagering, which was down 10 percent.

For more on the TVG outage, click [here](#), and for additional details on Derby Day numbers, click [here](#).



Get the Morning Headlines delivered straight to your inbox each morning - sign up [here now!](#)

Good Numbers for Laurel

Laurel Park's recently completed winter-spring meet was a successful one for the Maryland track.

Average daily handle at Laurel was \$2.372 million, up 34.5 percent from \$1.764 million in 2015. Total handle on Laurel's meet was \$151.1 million, up nine percent from \$140 million in 2015, while in-state wagering on Laurel was up 25 percent from \$37.4 million to \$46.7 million. Exports were up 12 percent.

"We continue to see growth in the Maryland Thoroughbred industry both locally and nationally," said Sal Sinatra, President and General Manager of the Maryland Jockey Club. "The sport is clearly undergoing a resurgence, and racing is being revitalized with better quality racing, more participation from horsemen around the country, and our growing off-track betting network have helped."

More information is available [here](#).

Check out our HORSE PLAYERS SECTION



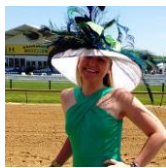
The go-to-site for...

TIPS & PICKS • CARRYOVERS • CANCELLATIONS
TOURNAMENTS • NEWS and MORE!

www.PaulickReport.com



Preakness: New Faces, New Paces



By [Melissa Nolan](#)

I find this 2016 rendition of the G1 Preakness Stakes to be fascinating due to the robust speed intrinsic to the probable starters, the rain that is forecast for race day, and potential effects of favorite Nyquist running a new career top on many performance/speed figure metrics when winning the Derby two weeks ago in 2:01.31 for 10 furlongs.

Nyquist on Top

After looking at the Preakness PPs for way longer than I'd like to admit, I've come to the very clever conclusion that Nyquist likely repeats in Baltimore what he did in Louisville and rolls into Belmont Park for the G1 Belmont Stakes as a Triple Crown candidate much like his predecessor I'll Have Another for the same connections.

With only two starts prior to their wins in Louisville, both Nyquist and I'll Have Another share the same 3-year-old prep race schedule devised by trainer Doug O'Neill that likewise produced similar conditioning pattern moves in both colts—a win while regressing in their final prep subsequently set the stage for a new top peak efforts weeks later in the Kentucky Derby.

The fact is, though, anticipating an even better effort from a Kentucky Derby winner in the Preakness is not a wise approach to handicapping the race, but picking him out as the likely winner is under the premise that our hero is fit and fast enough to regress yet still win. That's exactly what I expect from Nyquist and will single him in any multis and Black Eyed Susan-Preakness Doubles.

Need for Speed

You don't have to be Andy Beyer to notice all the speed horses in this Preakness field, and most of them appear "need the lead" types who will make things interesting for one another as well as Nyquist and provide ample opportunity for closers like Lani, Cherry Wine, and Fellowship to find success if good enough. While I don't necessarily believe any of the true speeds are win candidates, I am intrigued by the pedigree of Abiding Star, and the honesty of Uncle Lino as potential underneath horses in vertical gimmicks.

Both are by the man of the hour Uncle Mo, who will have four sons (along with Nyquist and Laoban), running in the Preakness and all of them possess above average route speed. Abiding Star looks to be the quickest of them all and may be leading the field into the Clubhouse turn, but his two stakes wins and performance numbers that increased with racing distance illustrate he's not cheap

speed.

This Florida-bred gelding gets a significant class and stamina boost via his fascinating Darby Dan "OG" [pedigree](#) featuring generations of "tail-female" line mares bred by [John W. Galbreath](#) himself using husbandry methods that infused his bloodstock with the genes of his prize foundation stallion Ribot without relying on inbreeding. One such technique is present in Abiding Star's pedigree via his [dam](#) and relies on the repetition of homogenous genes through heterogeneous bloodstock.

For example, breeding an influential mare to full brothers and keeping any resulting fillies as broodmares whose foals would possess the desirable genes cultivated through their dams along with the genetic diversity and vigor of their sires. This duplication of genes through female-line carriers helps develop the theory many believe that Thoroughbred "class" is transmitted through the mare. Overall, Abiding Star may be a diamond in the rough given the prepotency of his sire Uncle Mo, and the seriously rich bloodlines of his dam. Even if he doesn't win the Preakness it would be no surprise if he carried his speed far into the Pimlico homestretch.



Uncle Lino's [pedigree](#) is perhaps far less "academic" and deliberate than that of Abiding Star but is no less exciting. Uncle Lino has shown talent all winter running in Southern California graded events and recently won his first stakes while setting a track record in the California Chrome at Los Alamitos, going nine furlongs in 1:40.82 while on the lead throughout. In his prior start, he chased an extreme pace in the G1 Santa Anita Derby and held on to be third to Exaggerator and Mor Spirit. This colt has speed and heart, and while some may be deterred by the presence of Uncle Mo on top and Orientate as the broodmare sire, one quick check of the [production record](#) of his second dam Oatsee should allay many fears.

Oatsee is a mare I'm very familiar with having worked at KTA/KTOB when she was voted our KTOB Broodmare of the Year in 2011. Broodmare of the Year is the most prestigious recognition female Thoroughbred bloodstock can receive and only the very best mares join the ranks of breed game-changers such as Weekend Surprise, Relaxing, Baby Zip and Better than Honour. To earn her stripes, Oatsee produced G1Ws Shackleford (Preakness winner!)

(continued on next page)

and Lady Joanne (G1 Alabama at 10F and a full sister to Uncle Lino's dam Haysee), plus additional graded stakes winners Afleeting Lady, Baghdaria, and Stephanoatsee.

One last #funfact is that Oatsee produced [Shackleford](#) when mated to Forestry, a stallion who also shows up as Nyquist's broodmare sire (and was the cause of so much early consternation over our Derby winner's ability to stay 10F). In sum, while I'm not certain of Uncle Lino's ability to beat Nyquist going this trip over a potentially off-track, I am certain that he has the genetic roadmap to be any kind and the gameness needed to be the kind of racehorse bettors want to rely on. I have very high hopes for Uncle Lino's career and continued development going forward.

The Case for Lani

Lani is the enigmatic redheaded step-horse of the 2016 Triple Crown, and his eclectic behavior and training schedule has left many with a sour view of his ability. While I've kept an open mind about his preparations into the Derby, I remained dubious overall due to the sketchy form of his overseas races and very poor history of horses from Dubai running in Louisville and predictably tossed him from tickets as did so many bettors.

Lani did as he often does and ignored to our dismissals of him en route to finishing a sneaky good ninth in the Derby while running in spots and getting shuffled back entering the stretch before re-rallying again to only get beat 10 lengths. The colt is studdish and temperamental and knowing exactly if or how he'll run when he does is a mystery to even his own connections so bettors are really flying blind but that ambiguity is what creates value.

When focused, Lani is talented and it's unlikely we've seen his best races. The Preakness will now be the second race off the layoff following his immature but forward Derby run which validated his pugnacious reputation when running on through traffic when he should've quit, and taking dirt others were intimidated and tired.

This interesting son of Tapit is highly unlikely to turn the tables on Nyquist and win on Saturday but at potentially even longer odds than he was in Kentucky, more fitness to work with, a smaller field to negotiate, and more pace to chase, I think Lani is a fascinating horse worth using in some exotics if not a small WPS wager just in case.

"Special shout out to [Sid Fernando](#) and the team at [Werk Thoroughbred Consultants](#) for their assistance in the pedigree portion of this piece. They've forgotten more than I'll know about pedigrees so feel free to [contact](#) Team Werk for more information on nicking, inbreeding patterns, breeding recommendations and more."

About the author - Melissa is a lifelong racing fan who attended her first two Kentucky Derbies before she was 10 years old. She has dedicated much of her career to the horse industry, including working for prestigious operations such as Padua Stables, Hagyard Equine, TVG, Ken McPeck, and Kentucky Thoroughbred Association. She currently works as a Marketing professional and Social Media consultant and resides in Lexington.

Accentuating the Negatives

Ten Past Performance Red Flags

By Vin Rogers

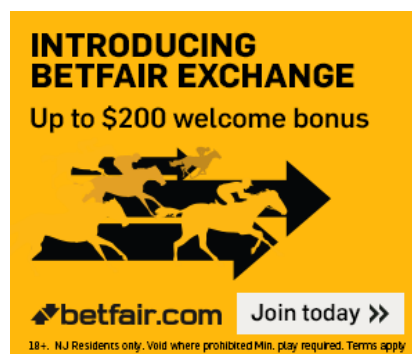
Anything can happen in a horse race; remember the immortal Man O' War's monumentally unpredicted loss to the aptly named "Upset"? Horses who should win often lose; and horses that should lose sometimes win. Why? It's the nature (and charm!) of our game.

Nevertheless, most handicappers continue to search for clues – evidence – in a horse's past performance that will minimize the margin for error and thus produce a reasonable number of winners.

It turns out, however, that the identification of potential winners is inextricably linked to the elimination of the most likely LOSERS.

So – who are the most likely losers? That depends on each handicapper's experience; but for me, the following are bright red flags:

1. Any horse wearing a bar shoe or aluminum pad. The equipment board is telling us that this guy's hurting.
2. Horses with three or more double-digit losses in a row in their most recent races; no excuses for three such dismal performances; current form is simply unacceptable.
3. Runners with odds of 20 to 1 or higher in their last three races. The public doesn't know everything, but it does know something.



4. Any horse with 15 or more starts with a record of only one win, but many seconds and thirds and (usually) a hefty and misleading earnings box. Don't be misled by ITM performances and earnings. These guys will very likely lose again.
5. Favorites which had double-digit losses in their last race. Jocks are aware they're riding well-bet horses; they know the public has included them in win, place, and show bets as well as supers and tris, etc. They will always do their best to get a win or ITM finish. When that doesn't happen, something's wrong.

(continued on next page)

6. Perennial losing closers (they always seem to need another 50 yards or so) and their counterparts, perennial faders. Even though their earnings and speed figures look good and they show many ITM finishes, they're money burners.



Join with promo code HANA

7. Older horses (five and up) coming off a one-year (or more) lay-off. Despite good works, connections, trainer stats, etc., they will almost always need more time.

8. An experienced horse which does not show one speed figure equaling today's par in its past performances has little or no chance of winning, and clearly needs a class drop.

9. Experienced, capable dirt winners which have never raced on grass, returning after a lay-off on grass. The race is almost certainly a prep for a race down the road; a conditioner.

10. Finally, for those who use Brisnet past performances – throw out any horse that ranks 8 points or more below the top horse in Brisnet's Prime Power ratings. (Prime Power is a comprehensive rating that combines speed, class, form, weight, and more into one powerful numerical rating.)

To repeat, rules are made to be broken and there will, of course, be exceptions. And throw-outs can and do finish ITM. Nevertheless, your ROI should increase if you incorporate all or some of these cautions into your daily handicapping routine.

About the author - Vin Rogers is a retired UCONN professor of Education, a jazz trumpeter, an ex-equestrian, and Thoroughbred owner. He finds handicapping endlessly fascinating and hopes someday to learn how to do it.

The Good, The Bad, and The Ugly

From HANA President Jeff Platt

THE GOOD:

- * Canterbury 15%, wps 18% all exotics
- * Keeneland 16% wps, 19% all exotics
- * Belmont 16% wps, 18.5% exacta, 15% pick 5
- * Woodbine 15% rolling doubles

THE BAD:

- * Santa Anita 22.68% exacta
- * Churchill 22% exacta
- * Turf Paradise 20.75% wps

THE UGLY:

- * Churchill using half of the Derby Day pick 6 carryover to seed a lone jackpot bet.
- * Parx 30% trifecta
- * Woodbine 27% trifecta, 25% pick 5, and a policy where local horseplayers in Canada are charged higher takeout when they bet trifectas on races run at some other tracks that have lower takeout than Woodbine.

We chuckled -



Sebastian Piscuskas
@SeaBass912



Follow

Stronach announces a \$12 million race, no one bats an eye. Horseplayers scream lower takeout and everyone loses their minds.

RETWEETS

2

LIKES

2



12:16 AM - 12 May 2016





THE SMART MONEY IS ON AMWAGER!

AMWAGER WAS BUILT FOR SERIOUS PLAYERS. IMPROVE YOUR WAGERING EXPERIENCE AND YOUR ROI.

- Our outstanding wager pad is feature rich and easy to navigate.
- Amazing rewards structure – cash rewards posted to your account daily.
- Lifetime referral bonus – Refer a frequent player and watch the money roll in on every dollar they play.
- Fantastic customer service - We're here for you when you need us.

2016 NATIONAL HANDICAPPING CHAMPIONSHIP WINNER PAUL MATTIES IS FAN OF AMWAGER.

3 of the top 5 finishers in the NHC tournament are AmWager members.

"When betting the races, use AmWager," said Matties, who is the Eclipse Award for Horseplayer of the Year. "This unique wager pad, with its fluid interface, has every feature you need to bet like a pro and cash tickets. How do I know? Because I helped design it."



JOIN TODAY AND GET A \$500 SIGN-UP BONUS TOO!

Exchange Tips from a Pro

"Jim" has been playing the exchanges since their inception and has been a professional horse racing and sports gambler since 2000. He shares some of his thoughts on what may help you when playing a betting exchange for horse racing.

HM: Liquidity is an important factor on exchanges. For US tracks do you find there is more action on some tracks than others? Is there any pattern as to what track gets played more or less by worldwide exchange players?

J: UK and Irish racing dominates on Betfair. The early afternoon US tracks will have poor volume in the summer because they will often be competing against 3 UK or Irish tracks. In the winter, the volume will be decent because they will usually only be competing against one UK all-weather track. The late afternoon and early races at the US evening tracks usually have better volume. It isn't uncommon to have days in the summer where Presque Isle will have ten times the volume of Belmont.

HM: Many new players are not used to laying (i.e. booking a bet on a horse). What type of bet sizing should people use when laying? Do you have any money management tips in general?

J: My typical rule of thumb is to try to win a certain % of my bankroll whether I was backing or laying. For laying, I try to win one percent of my bankroll with a maximum risk of five percent. My general tip is to be cautious in bet-sizing. The markets are generally pretty accurate, and get more accurate the closer you get to post-time.

HM: For UK racing, trading (backing and laying repeatedly for hopeful profit) is common. With shorter times between races in US racing, is this tactic still possible?

J: Trading is possible on US racing, although you might have to stick with the favorites in the market (any horse trading under 10), just because they tend to have the most volume. The US markets tend to start gaining volume around 10 minutes to post. Because the US markets are typically thinner than the UK markets, you will see larger moves on the exchanges. If you have a clear idea where the prices should end up, you can usually find some value early in the trading.

HM: In-running betting is a new feature of the exchange for US players. Do you have any general thoughts about in-running betting?

J: One of the good things about in-running betting is that you can have some unique angles that wouldn't be much of a factor before the race. Factors unique to certain

jockeys or horses can definitely be exploitable during the race.



HM: Bots are a hot topic with the exchange, and with pari-mutuel pools in general. Do you have an opinion on them, either for or against?

J: As a negative, the bots are tough to beat in most races because they do set a fairly efficient market. To beat them, you do need to be disciplined in setting prices.

As a positive, they are not perfect. There have been multiple instances where there has been a conceptual mistake in the programs that may only apply to a small percentage of races. But, if you can spot the mistake, you can obtain some massive overlays. The programs are only as good as their inputs.

HM: It's said the Exchange eliminates the favorite longshot bias because horses that may be 50-1 on the tote can be 200-1 or more on the exchange. Should new players take a closer look at super-longshots?

J: Historically in the UK markets, the Betfair prices are very efficient for horses trading under 100. Above 100, the horses tend to overbet, but the volumes are very thin and very volatile. A horse might trade at 300 3 minutes to post then trade at 200 a minute later.

In the US markets, it has always been hit-and-miss whether you will get matched on any longshot. The volume is on the lower-priced horses. If you want to bet on longshots, you need to be disciplined in not chasing a price if you want to get value. Accept the fact that if you don't get the target price that you want, you will not have a bet on the race.

I think I am all four, Don.....



Don Stevens
@horsemendon



Follow

The main reason horseplayers lose money?

12% Playing favorites

16% Spreading out too much

42% Playing too many tracks

30% Bad handicapping

134 votes • Final results

Exchange First Impressions

By [Chris Rossi](#)

Here are some quick first impressions from someone who made their first wagers on the BetFair exchange over the first weekend in May. These observations were made when the exchange was still in Beta; it has since launched officially.

-The track menu is limited. Below are today's available tracks. You will notice only two of the five offer in-running wagering:

Tampa Bay Dow... 0 MTP	Woodbine 20 MTP	Tampa Bay Dow... 25 MTP	Woodbine 55 MTP
---------------------------	--------------------	----------------------------	--------------------

Racing Schedule									
United States (5)									
Emerald Downs									
R1	R2	R3	R4	R5	R6	R7	R8		
17:00	17:27	17:55	18:25	18:55	19:25	19:55	20:		
Mountaineer Casino Racetrack & Resort									
R2	R3	R6	R9						
19:22	19:44	20:50	21:56						
Tampa Bay Downs									
R1	R2	R3	R4	R5	R6	R7	R8		
In Play	In 25'	In 57'	14:07	14:38	15:10	15:42	16:		
Turf Paradise									
R1	R2	R3	R4	R5	R6	R7	R8		
16:25	16:55	17:28	18:03	18:36	19:08	19:40	20:		
Woodbine									
R1	R2	R3	R4	R5	R6	R7	R8	R9	
In 20'	In 55'	14:10	14:43	15:16	15:49	16:53	17:		

-The commissions I've paid on winnings have been in the 9.8-10% range. It has been reported commissions will be 12%. I've no idea why there appears to be a discrepancy between what I'm paying and what the reported rate is.

-This is a whole new, fun world for me. The one thing that is striking to me is that I'm more engaged in betting throughout the entire process of activity in a race when liquidity begins to show up. So when trades begin in a race, I'm keeping my eye on that activity throughout the entire process. Because this is fixed odds wagering, there are opportunities to "middle" out of positions and lock up small profits in these fluctuations, if that's your thing. This is way different than waiting 30 minutes between races to see when the real late money comes in to react. The exchange allows you be engaged in a race at any time, real action *way* before the race. The other side of this is that you can just name your price well ahead of time and just leave it there to be matched.

-I was surprised at the level of liquidity of some races. There were races at Tampa that had more US\$ matched in the win pool on the exchange than were bet in the same pool on the tote. Obviously, there is pooling of the worldwide exchange with this US exchange. There's been real worry about liquidity if this exchange was to be limited to NJ-only players. It does not appear that will be case.

-In-play running is something I'm going to have to get used to. My impressions are that this is a mugs game. This is where your ability to get as close to a live video feed as possible is the difference between being a sucker and being good. My video feeds for Tampa and Turf Paradise were well behind what was actually happening in the in-running market and this was obvious to me from the very first race I played in-running. You can see who won the race based on the in-running market action well before whatever happens on the video feed. This signals to me that the exchange tech is very good and that, as usual, the old streaming video tech is outdated. Not sure what the answers are here to leveling the playing field but I didn't feel like I was playing on one. I believe there will be a major advantage to sitting at the track at Monmouth and playing in-running directly from the track.

-The exchange action is weird if you keep your eye on the tote too. Sometimes the two markets, taken together, make no sense at all. Sometimes they are closely aligned. Either way, this is just more, good signal information to take in when forming your opinion about a race. There's obviously "bots" at work on the exchange and one of the positives here is that the industry narrative that bots are destroying value doesn't hold up because you, and you alone, are the one setting whatever price is acceptable to you. I would imagine the bots are purely employed on the exchange to middle out entire races and capture small long term profits.

-The narrative in the US that is anti-exchange has mostly focused on how betting against horses is bad and will lead to all sorts of chicanery. I don't agree with that narrative. So far though, I really haven't seen compelling reasons to be laying horses in cheap claiming races on the tracks on offer. The only laying I've done so far is basically to capture back some value on horses where the action has shifted. I'm new to the concepts of laying so this will require more experimenting.

-Linking up accounts with 4NJBets and the NJ Exchange was very simple. I can move money between the two accounts seamlessly as if they were one account. NJ players who are interested in the exchange will be surprised at how well this is handled.

All in all, I hope more tracks are added to the menu and that NJ players embrace the exchange. To me, it's a very exciting development. It was so exciting to me that on Derby weekend, I hardly looked at and didn't even play any of the races at Churchill. If I can shift my action from the biggest day of the year to places like Tampa and Turf Paradise, that should signal how exciting it is. It makes playing through the tote seem like 2D versus the 3D of the exchange.

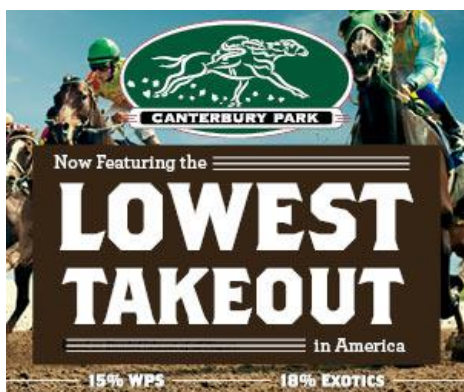
Decisions, Decisions...

By [Jonathan Stettin](#), [Past The Wire](#)

The serious horseplayer is faced with as many decisions as any businessman you'll find during a day at the office. Actually, I'd say more than most. Knowing when to zig instead of zag can be the difference not only between a profitable day or a losing one, but the difference between a life-changing score or scraping up enough money for the next day's past performances. Who to bet, how much to bet, when to bet, and how to bet are questions we have to answer repeatedly throughout the day. Even whether or not we should bet. It's nearly impossible to explain to a non-race tracker, the ups and downs and rollercoaster effect a day at the races can have. Try explaining a bad trip, or bad steward's decision, or losing a photo by a head bob that meant serious money to someone not in the game. They'll never get it.

I've done columns in the past discussing different wagering strategies, and how to structure different types of wagers. Today I'll discuss how to make some of the decisions mentioned above, and how to use those decisions to improve your game. Even if you are a recreational player, or just an occasional turf speculating fan, these principles should help you improve.

We already know we'll be wrong more than right. That tells us something I cannot stress enough. When you are right you have to make it count. Making it count involves many things; today we will talk about making right decisions. We'll talk what to go after and when.



We have to adapt to the changes in the game. I used to be a big pick 6 player. Today I only focus on that wager on big carryover days or on decent sized pool days without a carry over when there might not be as many sharks in the water. Even if you can keep up with the pools and syndicates, they will be reducing your payout. The pick 4, especially when it became a 50 cent wager, and subsequently the pick 5 changed the pick 6 landscape.

Before the pick 4 went to 50 cents I switched to that wager for a while. I had a disciplined system that worked

well until the 50 cent implementation caused the payoffs to drop. The big stakes days were the only exceptions when I'd play more of the card. I'd figure out every horse I wanted to use in each race, if there was a single so be it. If I got knocked out in an early leg, I waited for tomorrow. I stuck to one track. Once the bet changed to 50 cents I had to adapt again.

Today my wagers are more diversified. I still try to limit myself to one or maybe two tracks at the most. I also try to limit myself to classier races. I like investing in races where I know the Vets aren't training the horses, they are well meant, and everyone is trying. There is never a shortcut to doing your homework and the past performances have no cliff notes. The first decision is what track are you going to focus on? Obviously this will change with the meets and seasons. You really do need to limit your focus if you are really doing your homework and trying to beat the game. Properly studying a card takes time, and if you don't properly study the card, how will you make your next decision which is which race to bet?

Which races to go after is a crucial decision. Even the recreational player who wants to play every race can apply this principle. Just play proportionately to what you like. Not only do you not have to bet every race at every track, but you certainly don't have to bet the same amounts. If you are not going to take my all-in approach on the spots you like, and pass the others, at least adjust your investments where more of your bankroll goes towards the plays you really like and offer the most value.

Searching for value does not mean betting against who you think will win just to bet a horse with longer odds. As I've said before there is no value in a losing bet. If you like a horse at big odds, your wagering opportunities and decisions are plentiful, and you can go in many directions. If you like a shorter price horse then your decisions are limited. There are obviously less ways to create value with a shorter priced horse, but make no mistake it can be done.

Most ADWs and public handicappers, and even natural human instinct, draw us to multiple race wagers like pick 3's and 4's. There is nothing wrong with that and I play them myself regularly. What I don't do that many do, is automatically look at that as my first option. I find often the double, exacta, triple, and superfecta frequently offer more value than pick 3's and 4's and get ignored by many players. The pools are often bigger, and I suspect that has at least something to do with big bettors recognizing those opportunities.

If you like a horse that you'll call a comfortable single, the first thing most people do is look to play it in a multi-race sequence. Now you are pitting yourself against all the 50 cent players and syndicates that spread and use many horses. You are also looking to beat multiple races as opposed to just one or maybe two. One of the worst beats at the races is when your single in a multi-race wager wins,

(continued on next page)

and you don't cash. Ask yourself, do you really like and want to wager on all the races in the sequence? We all are familiar with that racing idiosyncrasy where you go six or seven deep in a race in a multi-race wager and get beat. The logical explanation is you didn't feel strong about the race and only played it because it was in the multi-race sequence.

Now back to our decisions. I like going after the singles. It makes all the sense in the world. My only suggestion is don't make the multi-race play an automatic. Look at the exacta pools. See how many horses you think can be second. It may be only two or three, or even one. One horse keyed on top of three is a \$3 wager. If you were planning to bet a 50 cent pick 4 investing \$90 there is a good chance your \$30 exacta could pay more and you only have to beat one race.

You can add the triple into the equation without a large increase to the investment. You just part wheel your key horse, with the horses you like for second and add the ones you think can run third or play it safe and go all in the third slot. The same applies to the super. I'm not a fan of the all button unless it is in the third or fourth slot of a triple or superfecta. Handicapping for third or fourth can be frustrating with riders easing up on horses they know won't win. You also give yourself the opportunity to come up with some ridiculously long odds horse, which is easier to catch in the third or fourth slot than the win.



Decisions, decisions, when to zig and when to zag. Only you can answer these questions, but you should be looking at alternatives and where your best chances for value lie, where your top choices are, where the pools are healthy, and where you can avoid some of the sharks in the water.

The double also gets ignored a lot, especially the rolling ones that lead into a pick 3, 4, 5, or 6. There is often value to be found there and you only have to beat two races not say four. A single will provide you the opportunity to take some say \$10 or \$25 doubles depending on your budget. At times you can invest the whole bankroll and maybe take a \$100 or \$200 double. Trust me, it feels as good as a 50 cent pick 4 even though the game seems to try and steer us to the multi-race bets.

You have options. I suggest you explore them.

Why Do You Lose?

By [Rich Halvey](#), [Halvey on Horse Racing](#)

It's hard to win at the races consistently. The game is stacked against bettors at the start. Takeout on bets of between 15 and 30 percent already puts players in a hole, and overcoming that amount takes enormous skill and discipline. Interestingly, the least likely reason people lose is that they are bad handicappers. In today's information age, handicappers have more opportunity than ever to find winners.



Join with promo code HANA

I'll offer some of the more likely reasons players have negative balance sheets.

You don't have a plan

How you bet should be dependent on your bankroll, and I'll elaborate a little more on that below. I've advocated that less capitalized bettors should focus on the win and exacta pools while reserving a small portion of your bankroll for more exotic wagers. Having a plan allows you to approach each card with some confidence. You have an idea of how you will attack each respective betting race, and being prepared creates confidence.

You handicap too many races at too many circuits

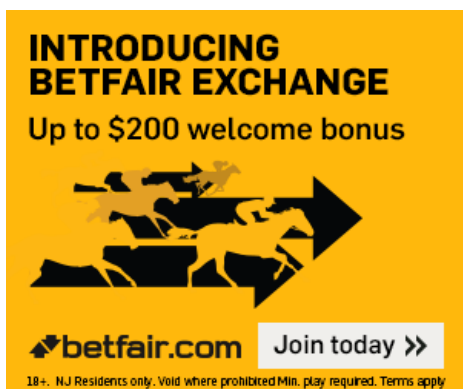
I think handicapping one card at one circuit can easily consume a couple of hours. There is a lot involved in handicapping a race. Figuring out how the race will be run, watching replays from previous races, getting an idea of the ability of each horse, looking into trainers and jockeys – all that takes time. Is it possible to do this for multiple race tracks and circuits? Sure, but it will take a lot of time both during the races and after the races. Not many people have that kind of time, yet they will be playing from the first race on the east coast to the last race at Los Al, and then maybe turn their attention to Australia. It is one thing to target specific race types at the different circuits,

(continued on next page)

but trying to play 30 to 50 races in a day would be tough for even the best handicappers. Most people playing the races have jobs, families and other obligations. Even if you are just playing on the weekend, it makes little sense to try to cram a large number of races into the day and expect to regularly come out ahead. Being a master at one circuit may be a better alternative than being mediocre at five.

You bet when there is no value

I've written about this extensively and cannot emphasize it enough. You have to get away from being selection oriented (I like the #3 horse in this race) and become value oriented (I believe the #3 is an overlay in this race). You have to discipline yourself to not bet when you don't have an edge.



You bet too many races

I bet every New York race day. In nine or ten races I'm happy to find five to seven races where I can find a value bet. It would be a rare day where I found bets in all ten races. I recognize that the action can be addictive, but you have to learn to substitute the thrill of winning consistently for the thrill of rooting something in every single race. I'll admit sometimes I wind up sitting when I should be betting, but I suspect that may be an easier problem to fix than betting too many races. Ask yourself that simple question before betting. Do I really have an edge here?

You hit a race and immediately increase your betting

We've all done it. You hit a race and the win bets go from \$20 to \$50 and you're throwing money at all the lottery bets. Why? Because psychologically you think, I'm hot! Riding the crest. One question – how long did it take before you were starting over with your bankroll? There is only one way to handle a big win. Discipline yourself to stick with what works.

You're not properly capitalized for the pools you are in

If you are investing \$100 a day in the pick six chances are you're not going to hit one unless it happens to be a particularly formful day. If there were six races with seven horses each that would be over 117,000 combinations. Keep records. What's your ROI on your bets? If you are a small bankroll player, the first pools you should look at are

win and exacta. I'm not suggesting you should never look at the Pick 5/6, but understand that you can kill your bankroll playing them.



You press when you're down

They call the last race the "get out race" because lots of people are trying to recover all their losses in that race. Remind yourself, it's just another betting race that you'll get into if there is value and there is always tomorrow. It rarely seems like pressing in the last works out unless that was the race you were waiting for all day.

You don't understand the math when it comes to exotics and you spread too thin

I want to pull my hair out every time I see TVG tweet out a pick 4 ticket with a 5/2 single and 60 combinations, the first question I ask is, is the pick 4 likely to pay more than the same amount on the single to win? Even with 50 cent pick 4's, a \$30 win ticket on the 5-2 shot pays \$105, meaning the pick 4 has to pay more than \$420 to be a better play. Same with the trifecta or superfecta. Anytime you single a horse you are making a win (or place) bet and you have to be astute enough to make a calculation. You ever hear someone "wheel" a horse in the exacta or the daily double? Yep, they are making a win bet. If you play Horse A to Horse B to some horses in a trifecta, you essentially made an exacta bet. You have to understand the bet you are really making.

You bet when you are on tilt

We've all suffered tough losses. Plain and simple, if you have a race to bet after you've had a bad beat, make sure you are thinking clearly.

Even in this day and age..... keep your eye on the charts



Andy Serling
@andyserling



Follow

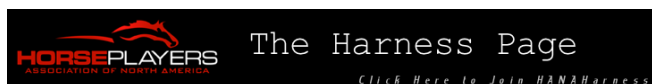
Please watch the 4th race from 4/9 at
[@GulfstreamPark](#), #3 Encrypt....and then read
the chart. Horseplayers deserve
better....MUCH better.

RETWEETS
2

LIKES
5



10:21 PM - 4 May 2016



Brought to you by [The Raceway at Western Fair District](#)

Tough Choices

Does Harness Racing Have the Will to Make Them?

By Dean Towers

Back in 2014, a study was commissioned in Australia in response to lost market share and lower participation in the sport of harness racing. The 2014 "Harness Racing Report" covered myriad issues, and in part asked over 1,000 participants and fans to address what might be going right, and might be going wrong. The comprehensive study released upwards of forty recommendations.

Some of the key findings in the report which were deemed to be hurting harness racing:

- i) Too many short priced favorites; killing tote value
- ii) Small pools
- iii) Drivers appearing to collude
- iv) Boring races and racing, with no movement
- v) Integrity issues, centered around driver tactics, their presentation of the product and animal welfare
- vi) Not giving customers more information

Immediately after the report was released, Harness Racing Victoria began to work on several of the most egregious and deleterious problems, hoping to spur some interest back into the sport. In all, so far about ten of the forty planks were addressed.



To tackle the short priced favorites, field size was looked at. The pari-mutuel reseller (TAB) presented data that showed 10 to 12 horse fields were needed to increase the bet. Even on small tracks with 8 across, 4 trailers were recommended. In addition, classification racing was encouraged to make fields more even for handicappers. For small pools, races were exported to France, not unlike what Yonkers has been doing with its product. Fixed odds

wagering was encouraged, despite its lower takeout when compared to pari-mutuel. Taking less off a bet to encourage more eyeballs and bigger pools was not deemed the devils work.

As far as integrity issues and apparent driver collusion, enhanced reporting and vigilant stewards helped send a message. If a horse was going to show a change in tactics, say by trying to leave after not doing so for some races, [the judges had to be alerted](#), and this information was passed on to customers. If a drive is not satisfactory, drivers have to explain why they did what they did to the stewards, and this information is too published for all to see.

Interference, not tipping wide – regular driver decisions – were also a part of this new transparent judging strategy. Fines and suspensions were levied on the spot, and communicated openly.

RACE 3 – SEELITE WINDOWS & DOORS VICBRED TROT (1720 MS)

Zoomalong Johnny broke shortly after the start and trailed the field thereafter. Zoomalong Johnny will now be placed outside the draw in future mobile start events.

Tawonga South pulled hard during the early and middle stages.

Jaden Gil hung in passing the 900m.

Champ Devine broke approaching the 100m. In view of the gelding's recent record a warning was issued.

Secret Kiss broke under pressure approaching the 50m.

William John shifted out under pressure over the final 200m. Driver Stephen Clarke was cautioned for his lack of control and reminded of his obligations to maintain a straight course over the concluding stages.

Stephen Clarke, driver of William John, was fined \$200 under Rule 156(3)(b) for applying the whip to the gelding with more than a wrist and elbow flicking action over the final 200m.

A typical new stewards report, published on the internet

As you can imagine, some of these decisions did not sit well with some. However, despite that, they were implemented.

Fast forwarding a year, the changes seemed to have helped, at least in part. Revenue going directly to the sport was up by 6.3 percent last year, and wagering handle (turnover) was up by 6.9 percent. This was the highest jump in either metric Harness Racing Victoria had seen for many years.

They've got their problems, like harness racing does anywhere, but they seem to be chipping away at it through new policy.

Here in North America I suspect that if you asked 1,000 people what harness racing's main issues were, you'd get a similar response.

- At some tracks, favorites win at greater than 50%, eroding value
- At some tracks, a \$40 win bet can change the odds board, eroding value
- Little movement and driver tactics make for some pretty boring harness racing
- Integrity issues, have, and will continue to be a problem

Does harness racing have the will to address these issues, along with other uncomfortable problems? I would think it should. Everyone wants to race in front of bigger crowds, with more people betting, with a bigger pool to tap potential horse owners and grow the sport, right?

For the too many short priced favorites problem in our
(continued on next page)

sport, some tracks, like the Meadowlands, are trying deeper fields. This is not exactly embraced. One of the leading drivers of the sport, Tim Tetrick, responded to DRF Harness about these races at the Meadowlands, "I'm not thrilled with the 11 and 12 horse fields."

Jim Takter, another participant outspoken against trailers, isn't a big fan either, preferring "noses on the gate".

To get pool size up, new strategies need to be tried, namely, better scheduling of meets and race off times, and an embrace of seeded and guaranteed pools; the latter pushed by USTA Strategic Wagering.

I think it's safe to say the industry has miles to go with this problem. It had to be dragged kicking and screaming into Strategic Wagering, and so little support was (and is) given to such an important venture, you'd wonder if anyone even cares. As for scheduling, that's been absolutely laughable. The way tracks speak to each other you'd think the rotary telephone has not even been invented yet.

Whereas racing in Australia has taking the integrity of the product on the racetrack seriously, over here (other than perhaps at the Meadowlands), it's not even an afterthought.

You or I could pull up 100 races over the last month where we see one or more of:

- i) A driver giving another a hole for no tactical reason, like getting them out of the flow
- ii) Half in half out, clogging the outside, hurting the back markers
- iii) A driver going to the back of the bus, and barely trying, with an odds-on favorite
- iv) Sudden reversals of form and driver tactics like they know it's coming
- v) Horses getting kicked, whipped in the genitals, or stifles
- vi) Passing up the inside

None of those infractions will be published on the web for fans and bettors to see like they do in Australia. In fact, it's almost 100% likely the judges won't even make a sound about them. There will be no warnings. There will be no "Driver X to the white phone please". There will be no fines. Nothing will be done.

For the odd time we do see something given, like a fine or days, it's something we have to hire Indiana Jones to find. Even worse, on appeal, the days might be handed out over Christmas when there is no racing, and the fine is often stayed. If a bettor or fan wants to ask why a fine was stayed, it's likely the commission will answer back with a stern, "none of your business, run along now." We often hear that harness racing needs to change. It needs to try new things, be innovative, be more customer-centric, spend money on promotion and marketing. It needs to be more than horses running around in a circle; like they were when Dan Patch was a star.

When suggestions like the above are forwarded to improve the sport, all we tend to hear in response is, "yes, I want change, but I didn't mean *that* change."

Harness racing will not grow by implementing consensus-led tweaking. The small-change bus left the station decades ago. Like it or not, it's *that* change that needs to be implemented, and people better start climbing aboard.

Take a Look at Molson Pace Night

The Raceway at Western Fair District in London, Ontario, will host the Molson Pace on May 27, and opportunities will be there not only for the horses, but for horseplayers as well.

The card will not just include the Molson Pace, but also Ontario Sires Stakes Gold Series action, several finals of the City of London Series and Alliance Series, and a few overnight events like a preferred-2 pace.

The Molson Pace field has been taking shape over the past few weeks with horses like three-time defending champion State Treasurer, former Levy Series champion P H Supercam, and millionaire All Bets Off all accepting invitations. Other horses to have invitations to compete are Evenin Of Pleasure, Sunfire Blue Chip, Bettor Rock On N, and Machtu N. As of writing, one position in the field remains available.

As for the wagering menu, they will have several guaranteed wagers, including a \$5,000 early pick 3, a \$10,000 early pick 4, a \$15,000 late pick 4, and an additional super high 5 race. And the news only gets better for horseplayers as all those wagers have takeout of just 15 percent.

Hat Trick for Nash

Rusty Nash scored a hat trick Sunday evening to be the top handicapper in week eight of the 2016 Hambletonian Society Grand Circuit Handicapping Challenge sponsored by *DRF Harness*, Green Acquisition Corporation, The Hambletonian Society, Hoosier Park Racing and Casino, Meadowlands Racing and Entertainment, Northfield Park, The Raceway at Western Fair District, Red Shores Charlottetown Driving Park, Tioga Downs, and Vernon Downs by tabbing the winner of the Confederation Cup and two Preferreds on the Flamboro Downs Sunday night program. Jay Hochstetler remains comfortably perched on the top of the overall standings leading the pack by 108.3 points.

The two Preferred races were added to the contest as the rules allow for up to two higher class non-Grand Circuit races to be added when only one Grand Circuit race is on the card.

With the selection of Big Rich (\$4.10), Woggy Rocks (\$5.10), and Confederation Cup winning Rockin Ron (\$3.60), Nash earned 38.25 points for the week. Dennis O'Hara, who stuck with Wiggle It Jiggleit, was second-best earning 26.85 points. Following close behind were Michael Carter (19.1) and Gordon Waterstone (18.63).

For full standings in the contest, please click [here](#).



BETAMERICA

HARNESS AND GREYHOUND HANDICAPPING CONTESTS

You can find things at BetAmerica that you just can't find at other tournament sites! Why go anywhere else to compete in contests and bet the races?

- ✓ PLAY CONTESTS & BET THE RACES FROM A SINGLE ACCOUNT
- ✓ FREE LIVE VIDEO
- ✓ UPDATED CURRENT ODDS
- ✓ FREE PAST PERFORMANCES
- ✓ FREE HANDICAPPING INFORMATION
- ✓ OPTIMIZED FOR MOBILE & TABLET
- ✓ RACE REPLAYS ARCHIVE

\$300 DEPOSIT BONUS
FOR NEW PLAYERS

BETAMERICA

LEGAL. SAFE. SECURE.

Ask about our VIP program

Terms & Conditions

100% deposit match bonus is based on first deposit only. Please be sure your first deposit is \$300 if you wish to claim the maximum bonus. Bonus will be released to your account at a rate of 10% of the value of each racing bet placed, or every contest entered. See site for full terms & conditions.

Take the 30 Day Challenge



By [Lenny Moon](#), [Equinometry.com](#)

Creating a new positive habit can take anywhere from a few days to a few months. It all depends on the individual and how easy or hard it is for that person to condition themselves to follow through with the positive habit on a daily basis.

As a child you may have been resistant to brushing your teeth twice a day but as you got older it hopefully has become second nature to do so. That would be an example of an easy-to-form positive habit.

On the other hand, eating healthy and exercising are often hard-to-form positive habits. While many people have the intention of getting in better physical shape at the start of every New Year most do not stick with the program very long. The proof of this is very easy to see as all you need to do is monitor the number of people in your local gym in January, February and so on. January will be the peak and each month after the number will fall until the only people there are the regulars. This is an example of a hard-to-form positive habit.

Both of these examples are generalizations as there may very well be some that never brush their teeth twice a day or even once a day. Likewise there may be some that start eating right and exercising and quickly establish a routine that sticks for life.

This reinforces the point that forming a positive habit is very individualized and there is no magic formula to determine how long it will take for you or me. With that said, I want to propose a challenge to you, one that I know will positively impact you as a horse player. For some it will be very easy, for others very hard and for most somewhere in between the two extremes.

The 30 Day Challenge

I am a betting man, obviously since this publication focuses heavily on that topic, and I will bet that only a small percentage of the people that read it are already in the habit of doing what I am going to challenge you to do.

If you are already doing it please let me know because you are one of the few that is putting yourself in the best position to win money at the races.

The challenge is simple: record your wagers for the next 30 days and review your results. Sounds easy enough right?

Like I said, if you are already doing this let me know, but for the rest of you I have a few questions for you to answer.

1. How do you know which tracks to bet if you are not keeping records?
2. How do you know which types of races to bet if you are not keeping records?
3. How do you know which pools to bet into if you are not keeping records?
4. How do you know if you are profitable if you are not keeping records?
5. How serious of a horse player are you if you are not keeping records?

Four Reasons why Record-Keeping is Critical

There is an overwhelming number of wagering options almost every day

We live in the simulcast era where you can bet on horse races from home almost 24 hours each day. There are hundreds of races to bet on most days and sometimes over a thousand pools to bet into during the course of a day.

It takes supreme discipline to avoid the temptation of diving into pool after pool after pool.

Only a few decades ago this was not the case but we live in a world dominated by the internet where betting is convenient and because of that turning a profit for most is much more difficult.



A very small number of wagers can create subconscious biases within you

Do you remember the first time you cashed a four figure ticket? How about the first time you proudly walked to the IRS window at your local track or OTB to cash a signer? What about that photo finish that resulted in the single most profitable day of your life? Do you remember that year when you couldn't cash a ticket at one of your favorite tracks and you stopped betting there? What about that streak of ten straight losing bets in turf sprints?

Of course you'll never forget that time you missed a five figure score by a nose in the final race of a Pick 4, right?

The point is that we remember the bets that trigger extreme emotions on both ends of the spectrum.

Big wins cause our body to pulse with adrenaline and put us in a state of euphoria making us feel invincible. On the contrary heart-wrenching losses bring a cloud of depression over us and make us question if all the effort is worth it.

(continued on page)

These extreme emotional states also have another effect on us, one that we likely are not aware of. They linger in the back of our minds, and the next time a similar situation arises, be it positive or negative, they impact whether or not we make a bet, which bets to make if we do and how much to bet.

The fact of the matter is that \$10,000 Pick 4 you cashed five years ago at Saratoga has resulted in you betting more at that meet in that pool every year since. It may have been the only significant Pick 4 you have ever cashed at Saratoga but the only thing you remember is that perfect day when all the pieces fell into place. Had you tracked your Pick 4 wagers at Saratoga you would know if that's a pool you should be betting often or if you should only bet it once in a while.

Similarly, that bad run you had at Keeneland a year ago, a track you always loved and one that is so player-friendly it is hard to resist, has soured you on it this year. What you are forgetting is the consistently profitable meets you had while betting Keeneland ever since they switched from polytrack to dirt. Again, had you tracked your play at Keeneland you would see that you had one bad meet, but four of the five prior to that were very profitable.

It will put you lengths ahead of your pari-mutuel competition

If the bet I mentioned at the beginning of this post is a winning one, which I believe it is then tracking your bets and looking at the results will give you a huge edge on the competition.

Most horseplayers bet blindly day after day, week after week, month after month and year after year without having a clue which situations are profitable for them and which are not.

Most horseplayers are surely throwing money away into situations they have very little success in and that means there is dead money in the pools for you to put in your pocket.



It is the most effective and efficient way to increase the number of winning bets you make

Reviewing the bets you made today will reveal something to you. Reviewing the bets you made over the last week will reveal even more. Reviewing the bets you

made over the last month will reveal even more than that and so on.

Just looking at the last 50-100 bets you made will provide you with some insights into where you are successful and where you need to improve. Doing so will open your eyes to just how many bets you make on a normal day. It will show you how many tracks you bet and how many different pools you bet. It will most importantly show you which situations resulted in profits and which resulted in losses. If you are not keeping records the only thing you know from day to day is whether your bankroll has grown or shrunk.

You may think you are an expert in maiden races or turf routes because you cashed a few bets in those situations but most of us only remember the big scores and tough beats. Everything in between is a blur and reality is often clouded by the outliers.



Taking Action on the 30 Day Challenge

The goal of this post was to show you how one action, which you can take right now, can position you to make smarter and more well informed wagering decisions.

This one action, which takes only minutes each day, will save you time and money immediately by pointing you to the situations where you are most profitable and helping you avoid those that are not.

You can find a notebook and start writing down your bets.

Or you can enter them in a spreadsheet.

Or build your own database.

Or you can do it how I do it and head over to the site I had built and use myself: [Wager Logged](#).

No matter how you decide to take the 30 day challenge I know it will have a positive impact on you as a horseplayer.

About the author- Lenny Moon is the founder of Wagerlogged.com, a site designed to take the pain out of record keeping and help horseplayers become more profitable at the betting windows. He is also the founder of Equinometry.com, a site dedicated to educating horseplayers of all levels about handicapping, betting and handicapping contest strategy.

The Back Page

Canterbury Park Stats Pack Part Two – Jockeys & Trainers

DIRT BY RIDER, all distances, sorted by wins Run Date: 4/20/2016 5:35:29 PM

UDM	PLAYS	WINS	WIN PCT	WIN IMPACT	WIN ROI	PLACES	PLACE PCT	PLACE ROI
GONCALVES LEANDRO R	252	65	0.2579	1.9518	1.0599	97	0.3849	0.8595
BUTLER DEAN P	256	53	0.207	1.5666	0.715	103	0.4023	0.8385
SANCHEZ HUGO	210	33	0.1571	1.189	1.071	66	0.3143	0.9007
CARRENO JORGE	194	30	0.1546	1.17	0.6389	59	0.3041	0.7724
VELAZQUEZ DENNY	194	28	0.1443	1.0921	0.7155	53	0.2732	0.6588
EIKLEBERRY RY	169	24	0.142	1.0747	0.6704	41	0.2426	0.547
FRANCO GEOVANNI	148	19	0.1284	0.9718	0.5703	53	0.3581	1.0959
HERNANDEZ ISRAEL	130	15	0.1154	0.8734	1.2615	29	0.2231	0.9662
VERGARA DANIEL P	119	15	0.1261	0.9543	0.5303	39	0.3277	0.7361
DELORME LARREN	115	13	0.113	0.8552	1.0496	20	0.1739	0.6374
MARTIN JR EDDIE	54	13	0.2407	1.8217	1.1685	17	0.3148	0.6611
MURPHY GLEN	136	8	0.0588	0.445	0.4235	29	0.2132	0.6316
MELLO DAVID	71	8	0.1127	0.8529	0.6296	17	0.2394	0.6606
CANCHARI ALEX	58	8	0.1379	1.0437	0.8172	19	0.3276	0.8414
STEVENS SCOTT A	36	8	0.2222	1.6817	0.9861	12	0.3333	0.9972
RICHARD RONALD	126	7	0.0556	0.4208	0.5381	23	0.1825	0.6984
GOODWIN NIK G	88	7	0.0795	0.6017	0.5932	13	0.1477	0.4795
KEITH LORI	47	6	0.1277	0.9665	0.8574	12	0.2553	0.9043
JOUBERT JENNA	51	5	0.098	0.7417	0.3804	14	0.2745	0.9696
MARTINEZ SETH B	28	5	0.1786	1.3517	0.8464	5	0.1786	0.3929
CANCHARI PATRICK	101	4	0.0396	0.2997	0.5347	12	0.1188	0.4604
ESCOBAR MARTIN	84	4	0.0476	0.3602	0.3357	10	0.119	0.3667
FACKLER CHRIS	36	4	0.1111	0.8408	0.8972	8	0.2222	0.6639
NOLAN PAUL M	38	3	0.0789	0.5971	1.5132	6	0.1579	0.8079
BECERRA OSCAR	36	2	0.0556	0.4208	0.3944	3	0.0833	0.1806
SWIONTEK MARCUS	28	2	0.0714	0.5404	0.2357	5	0.1786	0.6982
THORNTON MARIA	25	2	0.08	0.6055	0.304	6	0.24	0.66

DIRT, BY TRAINER, all distances, sorted by wins Run Date: 5/12/2016 10:37:13 AM

			WIN	WIN	WIN		PLACE	PLACE
UDM	PLAYS	WINS	PCT	IMPACT	ROI	PLACES	PCT	ROI

DIODORO ROBERTINO	158	39	0.2468	1.8678	0.7832	73	0.462	0.8019
RHONE BERNELL B	185	21	0.1135	0.859	0.5768	43	0.2324	0.5449
BRAVO FRANCISCO	93	21	0.2258	1.7089	0.9328	32	0.3441	0.8301
ROBERTSON MCLEAN	81	20	0.2469	1.8686	0.7914	33	0.4074	0.837
AMOSS THOMAS M	59	17	0.2881	2.1804	0.7153	30	0.5085	0.7915
SILVA MIGUEL ANGEL	102	16	0.1569	1.1874	1.0549	27	0.2647	0.8725
BIEHLER MICHAEL E	90	16	0.1778	1.3456	1.14	28	0.3111	0.8817
BERNDT JOEL	65	16	0.2462	1.8633	1.2354	26	0.4	0.9654
KEEN DALLAS E	64	15	0.2344	1.774	0.5563	27	0.4219	0.7227
PADILLA TIM P	68	14	0.2059	1.5583	0.9559	30	0.4412	1.089
VAN WINKLE DAVID	105	12	0.1143	0.865	0.5695	28	0.2667	0.6714
LUND VALORIE	85	12	0.1412	1.0686	0.7212	30	0.3529	0.9294
RENGSTORF TONY	87	11	0.1264	0.9566	1.4448	22	0.2529	0.8931
RARICK RANDY	57	11	0.193	1.4607	0.993	17	0.2982	0.7737
RIECKEN BRUCE L	81	9	0.1111	0.8408	1.0975	16	0.1975	0.6654
MCFARLANE DAN L	52	9	0.1731	1.3101	0.9904	18	0.3462	1.1462
BETHKE TROY A	109	8	0.0734	0.5555	0.5697	22	0.2018	0.655
SCHERER GARY M	66	8	0.1212	0.9173	0.4955	18	0.2727	0.6636
HEITZMANN ERIC L	42	7	0.1667	1.2616	0.6167	15	0.3571	1
HANSON VICTOR	66	6	0.0909	0.6879	0.3273	20	0.303	1.1614
SWEERE SANDRA	48	6	0.125	0.946	0.9063	12	0.25	0.7146
TURCO CHUCK	57	5	0.0877	0.6637	0.5842	10	0.1754	0.4982
SCHERBENSKE PERCY E	43	5	0.1163	0.8802	0.7605	10	0.2326	0.8163
BRINSON CLAY	38	5	0.1316	0.996	0.5737	13	0.3421	0.6711
MCSHANE DAVID D	18	5	0.2778	2.1024	3.7111	7	0.3889	1.7222
DONLIN LARRY D	60	4	0.0667	0.5048	0.855	14	0.2333	1.1233
TRACY JR RAY E	62	3	0.0484	0.3663	0.2081	10	0.1613	0.4323
SHEEHAN NANCY	55	3	0.0545	0.4125	0.7327	5	0.0909	0.3055
LITFIN NEVADA	39	3	0.0769	0.582	0.541	8	0.2051	0.7872
LAVANWAY DAYSON	32	3	0.0938	0.7099	0.725	4	0.125	0.3031
OLIVER DOUG	23	3	0.1304	0.9869	0.5783	4	0.1739	0.3478

TURF BY RIDER, all distances sorted by wins

Run Date: 4/20/2016 5:32:33 PM

UDM	PLAYS	WINS	WIN PCT	WIN IMPACT	WIN ROI	PLACES	PLACE PCT	PLACE ROI
GONCALVES LEANDRO R	107	23	0.215	1.9293	1.0178	44	0.4112	0.9991
FRANCO GEOVANNI	100	22	0.22	1.9742	1.104	32	0.32	0.86
BUTLER DEAN P	115	21	0.1826	1.6386	0.8478	41	0.3565	0.7783
VELAZQUEZ DENNY	101	14	0.1386	1.2438	0.5822	26	0.2574	0.8228
SANCHEZ HUGO	101	9	0.0891	0.7996	0.5752	23	0.2277	0.901
CARRENO JORGE	79	8	0.1013	0.909	0.9747	14	0.1772	0.5924
EIKLEBERRY RY	76	8	0.1053	0.9449	0.7316	16	0.2105	0.6947
VERGARA DANIEL P	66	5	0.0758	0.6802	0.3939	17	0.2576	0.8167
ESCOBAR MARTIN	43	5	0.1163	1.0436	0.5419	9	0.2093	0.5698
RICHARD RONALD	73	4	0.0548	0.4918	0.5301	12	0.1644	1.0233
DELORME LARREN	50	4	0.08	0.7179	0.996	5	0.1	0.452
GOODWIN NIK G	33	4	0.1212	1.0876	0.6091	8	0.2424	1.4273
HERNANDEZ ISRAEL	59	3	0.0508	0.4559	0.9966	7	0.1186	1.1034
MURPHY GLEN	48	3	0.0625	0.5609	0.3125	6	0.125	0.4521
CANCHARI ALEX	24	3	0.125	1.1217	0.6625	7	0.2917	0.8042
MARTINEZ SETH B	22	2	0.0909	0.8157	0.5818	4	0.1818	0.5045
LOPEZ JR CARLOS E	22	2	0.0909	0.8157	1.0318	6	0.2727	1.5682
LANERIE COREY J	2	2	1	8.9737	6.55	2	1	2.35
CANCHARI PATRICK	43	1	0.0233	0.2091	0.0419	4	0.093	0.4442
MARTIN JR EDDIE	29	1	0.0345	0.3096	1.5207	1	0.0345	0.6379
KEITH LORI	23	1	0.0435	0.3904	0.387	1	0.0435	0.1522
MELLO DAVID	22	1	0.0455	0.4083	0.9045	2	0.0909	0.3818
WILLEY KATELIN	13	1	0.0769	0.6901	1.8692	2	0.1538	1.1
JOUBERT JENNA	10	1	0.1	0.8974	8.05	2	0.2	2.78
REID JENNIFER	8	1	0.125	1.1217	0.7375	2	0.25	0.85
HOMEISTER JR ROSEMAR	6	1	0.1667	1.4959	0.75	3	0.5	1.6333
BECERRA OSCAR	6	1	0.1667	1.4959	1.45	1	0.1667	0.6333
GEROUX FLORENT	1	1	1	8.9737	5.4	1	1	2.8

TURF BY TRAINER, all distances, sorted by wins Run Date: 5/12/2016 10:42:50 AM

UDM	PLAYS	WINS	WIN PCT	WIN IMPACT	WIN ROI	PLACE PLACES	PLACE PCT	PLACE ROI
ROBERTSON MCLEAN	50	12	0.24	2.1537	0.9	20	0.4	0.852
BRINSON CLAY	41	11	0.2683	2.4076	1.2488	15	0.3659	0.8195
BIEHLER MICHAEL E	62	10	0.1613	1.4475	0.9468	15	0.2419	0.6129
DIODORO ROBERTINO	61	9	0.1475	1.3236	0.7672	18	0.2951	0.7689
AMOSS THOMAS M	27	9	0.3333	2.9909	1.0778	15	0.5556	1.0741
LUND VALORIE	49	8	0.1633	1.4654	0.6796	13	0.2653	0.7163
BRAVO FRANCISCO	29	8	0.2759	2.4758	2.5897	9	0.3103	1.0483
MCFARLANE DAN L	42	7	0.1667	1.4959	1.1452	11	0.2619	0.8286
KEEN DALLAS E	31	7	0.2258	2.0263	0.7452	14	0.4516	1.0258
RHONE BERNELL B	89	6	0.0674	0.6048	0.473	21	0.236	0.5843
SCHERER GARY M	45	5	0.1111	0.997	0.4844	9	0.2	0.4867
RENGSTORF TONY	36	5	0.1389	1.2464	1.1222	9	0.25	1.1333
LITFIN NEVADA	29	3	0.1034	0.9279	1.8	8	0.2759	1.8345
CHAMBERS MIKE	12	3	0.25	2.2434	1.05	3	0.25	0.5917
OCALLAGHAN CARL	36	2	0.0556	0.4989	0.725	5	0.1389	0.7139
SILVA MIGUEL ANGEL	34	2	0.0588	0.5277	0.6735	3	0.0882	0.35
SWEERE SANDRA	29	2	0.069	0.6192	0.2724	7	0.2414	1.1862
OLIVER DOUG	26	2	0.0769	0.6901	0.8846	6	0.2308	0.7692
KIRBY MIKE	18	2	0.1111	0.997	1.2	3	0.1667	0.6722
DONLIN JR LARRY D	18	2	0.1111	0.997	0.2333	3	0.1667	0.55
SHAW TYRONE	14	2	0.1429	1.2823	0.7286	4	0.2857	0.7929
SCHERER RICHARD R	12	2	0.1667	1.4959	0.8917	6	0.5	1.3167
WEIR GREGORY H	12	2	0.1667	1.4959	3.9833	3	0.25	2.075
LEDGESS C DALE	7	2	0.2857	2.5638	3.0857	2	0.2857	1.3714
BECKER JUDD	5	2	0.4	3.5895	2.96	2	0.4	1.5
ROBERTSON JAMES C	4	2	0.5	4.4868	1.3	3	0.75	1.2
ANDERSON DAVID C	32	1	0.0313	0.2809	0.1125	5	0.1563	0.5031
VAN WINKLE DAVID	29	1	0.0345	0.3096	0.1862	7	0.2414	0.5138
SHEEHAN NANCY	26	1	0.0385	0.3455	0.1577	4	0.1538	0.6846
TRACY JR RAY E	22	1	0.0455	0.4083	0.1364	3	0.1364	0.9727
SCHERBENSKE PERCY E	19	1	0.0526	0.472	0.3211	4	0.2105	1.1895

BY RIDER sorted by wins

Run Date: 4/20/2016 5:21:02 PM

UDM	PLAYS	WINS	WIN PCT	WIN IMPACT	WIN ROI	PLACES	PLACE PCT	PLACE ROI
GONCALVES LEANDRO R	359	88	0.2451	1.9505	1.0474	141	0.3928	0.9011
BUTLER DEAN P	371	74	0.1995	1.5876	0.7562	144	0.3881	0.8198
SANCHEZ HUGO	311	42	0.135	1.0743	0.91	89	0.2862	0.9008
VELAZQUEZ DENNY	295	42	0.1424	1.1332	0.6698	79	0.2678	0.7149
FRANCO GEOVANNI	248	41	0.1653	1.3155	0.7855	85	0.3427	1.0008
CARRENO JORGE	273	38	0.1392	1.1078	0.7361	73	0.2674	0.7203
EIKLEBERRY RY	245	32	0.1306	1.0393	0.6894	57	0.2327	0.5929
VERGARA DANIEL P	185	20	0.1081	0.8603	0.4816	56	0.3027	0.7649
HERNANDEZ ISRAEL	189	18	0.0952	0.7576	1.1788	36	0.1905	1.009
DELORME LARREN	165	17	0.103	0.8197	1.0333	25	0.1515	0.5812
MARTIN JR EDDIE	83	14	0.1687	1.3425	1.2916	18	0.2169	0.653
RICHARD RONALD	199	11	0.0553	0.4401	0.5352	35	0.1759	0.8176
MURPHY GLEN	184	11	0.0598	0.4759	0.3946	35	0.1902	0.5848
GOODWIN NIK G	121	11	0.0909	0.7234	0.5975	21	0.1736	0.738
CANCHARI ALEX	82	11	0.1341	1.0672	0.772	26	0.3171	0.8305
ESCOBAR MARTIN	127	9	0.0709	0.5642	0.4055	19	0.1496	0.4354
MELLO DAVID	93	9	0.0968	0.7703	0.6946	19	0.2043	0.5946
STEVENS SCOTT A	52	8	0.1538	1.2239	0.6827	13	0.25	0.9019
KEITH LORI	70	7	0.1	0.7958	0.7029	13	0.1857	0.6571
MARTINEZ SETH B	50	7	0.14	1.1141	0.73	9	0.18	0.442
JOUBERT JENNA	61	6	0.0984	0.7831	1.6377	16	0.2623	1.2664
CANCHARI PATRICK	144	5	0.0347	0.2761	0.3875	16	0.1111	0.4556
FACKLER CHRIS	51	4	0.0784	0.6239	0.6333	9	0.1765	0.5314
LOPEZ JR CARLOS E	66	3	0.0455	0.3621	0.9667	10	0.1515	1.3439
NOLAN PAUL M	61	3	0.0492	0.3915	0.9426	7	0.1148	0.782
BECERRA OSCAR	42	3	0.0714	0.5682	0.5452	4	0.0952	0.2452
REID JENNIFER	21	3	0.1429	1.1372	1.1143	5	0.2381	0.7429
THORNTON MARIA	28	2	0.0714	0.5682	0.2714	6	0.2143	0.5893
SWIONTEK MARCUS	28	2	0.0714	0.5682	0.2357	5	0.1786	0.6982
LANERIE COREY J	2	2	1	7.958	6.55	2	1	2.35
WILLEY KATELIN	35	1	0.0286	0.2276	0.6943	4	0.1143	0.6229

BY TRAINER sorted by wins

Run Date: 4/20/2016 5:22:22 PM

UDM	PLAYS	WINS	WIN PCT	WIN IMPACT	WIN ROI	PLACE PLACES	PLACE PCT	PLACE ROI
DIODORO ROBERTINO	219	48	0.2192	1.7444	0.7788	91	0.4155	0.7927
ROBERTSON MCLEAN	131	32	0.2443	1.9441	0.8328	53	0.4046	0.8427
BRAVO FRANCISCO	122	29	0.2377	1.8916	1.3266	41	0.3361	0.882
RHONE BERNELL B	274	27	0.0985	0.7839	0.5431	64	0.2336	0.5577
BIEHLER MICHAEL E	152	26	0.1711	1.3616	1.0612	43	0.2829	0.772
AMOSS THOMAS M	86	26	0.3023	2.4057	0.8291	45	0.5233	0.8802
KEEN DALLAS E	95	22	0.2316	1.8431	0.6179	41	0.4316	0.8216
LUND VALORIE	134	20	0.1493	1.1881	0.706	43	0.3209	0.8515
SILVA MIGUEL ANGEL	136	18	0.1324	1.0536	0.9596	30	0.2206	0.7419
RENGSTORF TONY	123	16	0.1301	1.0353	1.3504	31	0.252	0.9634
MCFARLANE DAN L	94	16	0.1702	1.3545	1.0596	29	0.3085	1.0043
BERNDT JOEL	82	16	0.1951	1.5526	0.9793	28	0.3415	0.8116
BRINSON CLAY	79	16	0.2025	1.6115	0.9241	28	0.3544	0.7481
PADILLA TIM P	82	15	0.1829	1.4555	0.8976	34	0.4146	1.0701
VAN WINKLE DAVID	134	13	0.097	0.7719	0.4866	35	0.2612	0.6373
SCHERER GARY M	111	13	0.1171	0.9319	0.491	27	0.2432	0.5919
RARICK RANDY	69	11	0.1594	1.2685	0.8203	17	0.2464	0.6391
RIECKEN BRUCE L	94	9	0.0957	0.7616	0.9457	16	0.1702	0.5734
BETHKE TROY A	119	8	0.0672	0.5348	0.5218	22	0.1849	0.6
SWEERE SANDRA	77	8	0.1039	0.8268	0.6675	19	0.2468	0.8922
HEITZMANN ERIC L	53	8	0.1509	1.2009	0.5358	16	0.3019	0.8264
HANSON VICTOR	78	7	0.0897	0.7138	1.309	22	0.2821	1.3391
LITFIN NEVADA	68	6	0.0882	0.7019	1.0779	16	0.2353	1.2338
SCHERBENSKE PERCY E	62	6	0.0968	0.7703	0.6258	14	0.2258	0.9306
DONLIN LARRY D	76	5	0.0658	0.5236	0.7776	18	0.2368	1.1908
TURCO CHUCK	67	5	0.0746	0.5937	0.497	11	0.1642	0.4716
OLIVER DOUG	49	5	0.102	0.8117	0.7408	10	0.2041	0.5714
KIRBY MIKE	34	5	0.1471	1.1706	1.2676	8	0.2353	0.85
CHAMBERS MIKE	27	5	0.1852	1.4738	0.6185	9	0.3333	0.7667
MCSHANE DAVID D	23	5	0.2174	1.7301	2.9043	7	0.3043	1.3478
TRACY JR RAY E	84	4	0.0476	0.3788	0.1893	13	0.1548	0.5738